

2013 – 2016 CAPITAL PLAN

April 2012



Collaborate • Create • Learn

TABLE OF CONTENTS

	Page
Executive Summary	3
Year One	5
• Priority One: New Spruce Grove K-9 School	
• Priority Two: Woodhaven Preservation, Modernization, Addition	6
Year Two	11
• Priority One: New Spruce Grove/Stony Plain K-9 School	
• Priority Two: Stony Plain Central Preservation, Modernization	12
Appendix A	16
Parkland September 30, 2011 Enrolments by School and Grade	
Appendix B	19
Parkland Projected 15 Year Enrolments by School	
Appendix C	37
Spruce Grove Long Range Facilities Plan: Projected Enrolments and Schools	
Appendix D	48
New Spruce Grove K-9 School: Developer Commitment Letter and Site Map	
Appendix E	55
Parkland System Review: Community Consultation	



Collaborate • Create • Learn

EXECUTIVE SUMMARY

Situated on the western edge of Edmonton, including the City of Spruce Grove and the Town of Stony Plain, and stretching approximately 100 km west to the Pembina River, Parkland School Division serves the educational needs of approximately 9,600 kindergarten to grade twelve students within twenty-five urban and rural instructional sites.

Originally an agricultural region, over the past twenty-five years the economic base has become increasingly industrial through the development of major power generation and coal mining projects at TransAlta Utilities (near Lake Wabamun), oil and gas resources, and the industrial, commercial and urban developments in the Acheson Park and the Ellis and Sherwin Industrial Parks.

Serving over 58,000 residents in an area of over 3,995 square kilometers, the jurisdiction operates 22 schools in addition to a number of alternate sites including: Connections for Learning, two high school outreach programs and an institutional program. With approximately 590 certificated teaching staff and 469 support staff, the Division facilitates planning and the coordination of services by dividing the jurisdiction into three zones: Spruce Grove, Stony Plain and West End.

Parkland School Division has undertaken a comprehensive system review of the facilities, boundaries and program locations to develop a long term planning framework that addresses changing demographics, an imbalance between facility capacity compared to current and projected enrolments, lack of capital funding for new school space and limited ability to accommodate additional students at schools. It has become evident throughout this review that the Division is experiencing significant growth and changes in demographics.

Parkland School Division anticipates having difficulty accommodating projected enrolments in the Town of Stony Plain and the City of Spruce Grove within the next 5 years. The Division believes that through the building of new schools as well as the modernization and preservation of existing facilities we can meet the expected pressures that will be placed on the Division.

Parkland School Division has been actively pursuing collaborative partnerships with both our Municipal and Education partners for new school space. While we have no definitive commitment, our discussions continue.

The first year project priorities are:

- New K-9 school to be located in Spruce Grove with a capacity of 900 students at a cost of \$22,028,425 million dollars.
- Complete preservation and modernization of Woodhaven School in order to accommodate up to 900 students at a cost of \$9,451,224 million dollars.

The second year project priorities are:

- New K-9 school with a capacity of 900 students to serve both communities of Spruce Grove and Stony Plain at a cost of \$22,028,425 million dollars.
- Complete preservation and modernization of Stony Plain Central School at a cost of \$9,179,130 million dollars.

The third year project priorities are:

- To be determined as the current system review is completed and ten year facilities plan is developed.

Please note that the Table of Contents (Page 2) references supporting documentation for the priorities identified above.

YEAR ONE – PRIORITY ONE: New Spruce Grove K-9 School

New K-9 school to be located in Spruce Grove with a capacity of 900 students at an estimated cost of \$22,028,425 million dollars

While completing Parkland School Division's system review of the facilities, boundaries and programs the division amassed data that supports the need for a new K-9 school in the City of Spruce Grove.

The latest Statistics Canada Census data indicated growth at 6.8% over the five year period between 2006 and 2011. The City of Spruce Grove and Parkland School Division continue to project growth at over 6% per year.

The current enrolments for all Spruce Grove schools are found in Appendix A. Appendix B contain the projected enrolments up to 2021. The data within these tables demonstrates that all schools containing K-9 grade levels are currently in excess of 85% capacity. Both early years schools; Brookwood and Millgrove are now over 100% capacities (107.7% and 107.3% respectively). The two middle year's schools; Greystone and Woodhaven are projected to surpass 100% capacity by 2014 and 2013 respectively.

Based on the City of Spruce Grove area structure plans at January 2012, Parkland School Division completed a *Long Range Enrolment and Number of Schools Analysis*. The document, found in Appendix C, indicates that the City of Spruce Grove will require four new K-9 schools by the time the City is fully built out.

The long range study identified the need for four new school sites in the City of Spruce Grove as well as the areas of the city where the schools should be located. Parkland School Division met with the City of Spruce Grove and agreed on two potential sites. Appendix D contains the letter of commitment from one of the land developers as well as the completed *Site Readiness Checklist*.

Parkland School Division has been actively pursuing collaborative partnerships with both our Municipal and Education partners for new school space. While we have no definitive commitment, our discussions continue.

YEAR ONE – PRIORITY TWO: Woodhaven Preservation, Modernization, Addition

Parkland School Division has identified Woodhaven Middle School as a candidate for a complete preservation and modernization in order to accommodate 900 students at an estimated cost of \$9,451,224 million dollars.

The November 2010 facility audit by Alberta Infrastructure and the projected enrolment numbers in the City of Spruce Grove support the need for this project.

The City of Spruce Grove grew by 33.9% from 2006 to 2011 to 26,171 residents. Parkland School Division anticipates that in the City of Spruce Grove student enrolments will increase by over 42% from 3,066 currently to 7718 student enrolments by 2021. Expanding Woodhaven Middle School to a capacity of 900 students along with the other proposed capital projects will allow Parkland School Division to meet the growing needs of the community.

The architectural firm of ONPA Architects was commissioned to develop a preliminary site plan that would allow Woodhaven Middle School to house the anticipated enrolment of 900 students. The estimated cost of the proposed additions is \$4.0 million the estimated cost of the identified maintenance items and renovations is \$5.5 million for a total project cost of \$9.5 million.

The Alberta Infrastructure audit on Woodhaven Middle School in November of 2010 identified \$3,610,360 of maintenance work that will be required to the site in the next ten years.

Alberta Infrastructure Audit: Maintenance

The maintenance work identified in the facility audit is broken down by years as follows:

2012	\$	51,815	2016	\$	114,500
2013	\$	45,000	2017	\$	0
2014	\$	0	2018	\$	126,315
2015	\$	3,190,434	2019	\$	80,323

The full detailed audit can be provided on request.

ONPA Architects: Expansion

The highlights of the expansion include:

- Gym: existing – 453.3m² / required – 815m²
- Library: existing – 174.2m² / required – 360m²
- Administration: existing – 364m² / required – 632m²

There were also additional classrooms and 2 additional science rooms required as well as an increase in flex space.

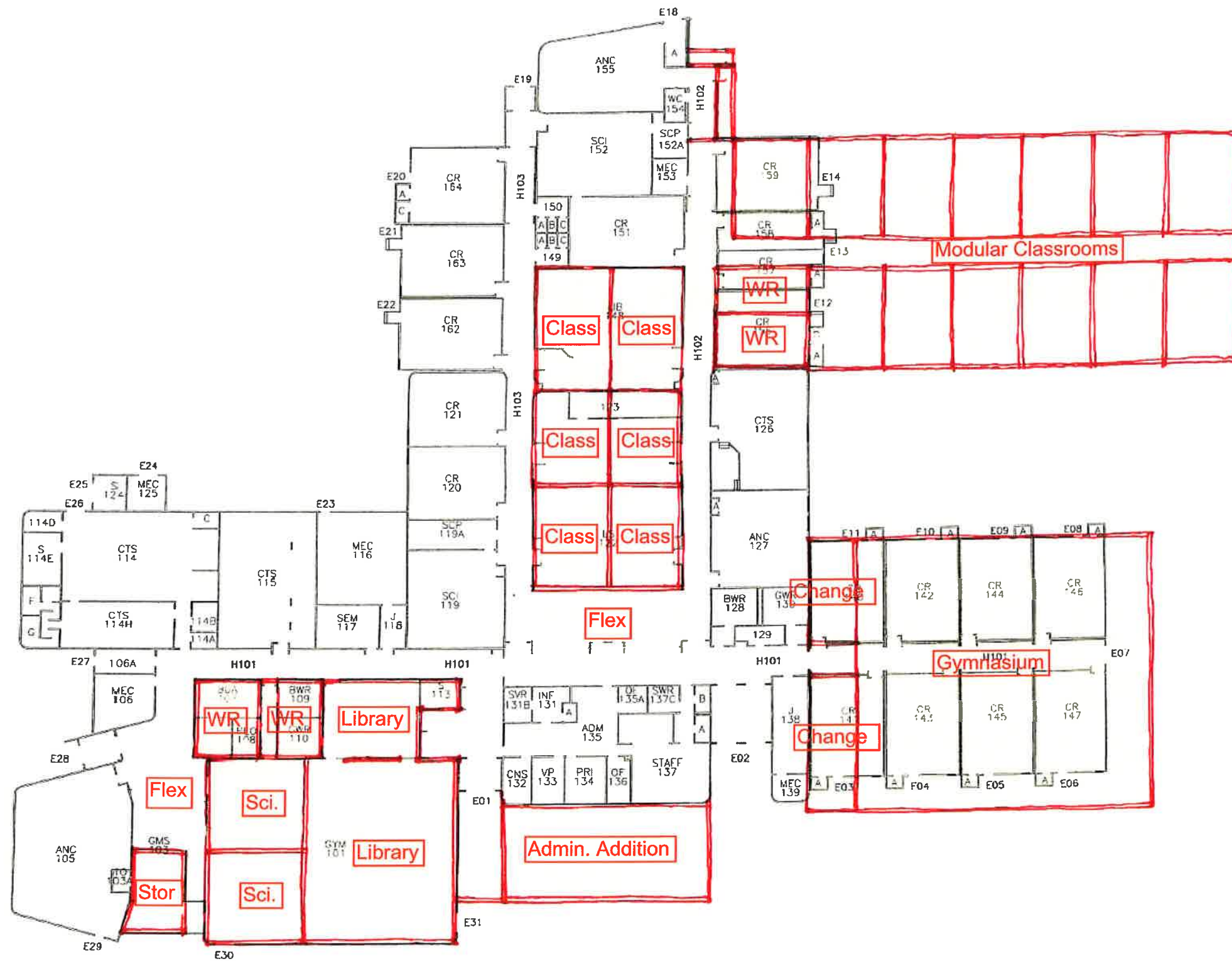
The attached maps provide two options for the proposed modernization; the addition area would be approximately 1,243m² of permanent construction and then additional modular classrooms with the remainder being renovation space. As part of the gymnasium addition, extra mechanical systems would be required. The significant difference between options is the gymnasium location.

This expansion would allow the school to meet the standards as set out by Alberta Education for a middle school of 900 students.

PARKLAND SCHOOL DIVISION

					WOODHAVEN GRADES 5 TO 9 EXPANSION TO 900 CORE PROGRAM REQUIREMENTS ALLOWANCE				February 15, 2012 PROPOSED ADDITIONAL SPACE			
CURRENT												
		No. of	m2 per			No. of	m2 per			No. of	m2 per	
		Instruct.	Instruct.	Total		Instruct.	Instruct.	Total		Instruct.	Instruct.	Total
INSTRUCTIONAL SPACE	Capacity	Spaces	Space	m2	Capacity	Spaces	Space	m2	Capacity	Spaces	Space	m2
ECS Classrooms	0	0	90	0	0	0	80	0	0	0	90	0
Regular Classrooms	75	3	72.2	216.5	575	23	80	1840	500	12	80	960
Spec. Ed. Classrooms	0	0	80	0	0	0	80	0	0	0	80	0
Core Portable Classrooms	0	0	80	0	0	0	80	0	0	0	80	0
Science Classrooms (including prep)	50	2	112.4	224.7	100	4	120	480	50	2	120	255.3
Bus. Ed. (Computer) Classrooms	0	0	115	0	75	3	115	345	75	3	115	345
Ancillary (Computer)	25	1	90	90	50	2	90	180	25	1	90	90
Ancillary (Band)	25	1	164.4	164.4	25	1	130	130	0	0	130	0
Ancillary (Drama)	0	0	130	0	25	1	130	130	25	1	130	130
Ancillary (Art)	25	1	101.7	101.7	25	1	90	90	0	0	90	0
CTS (Home Economics)	20	1	130.5	130.5	20	1	180	180	0	0	180	49.5
CTS (Industrial Arts)	20	1	250.9	250.9	20	1	275	275	0	0	275	24.1
CTS (Teaching Kitchen)	0	0	250	0	0	0	250	0	0	0	250	0
CTS (Design)	20	1	113.6	113.6	20	1	120	120	0	0	120	6.4
Library	0	0	194	194	0	0	360	360	0	0	360	166
Media Room	0	0	0	0	0	0	0	0	0	0	0	0
Gymnasium	0	0	453.2	453.2	0	0	815	815	0	0	815	362
Gymnasium Storage	0	0	103.4	103.4	0	0	82	82	0	0	0	0
Total Net instructional space					260	11		2042.9	935	38		5027
					675	19		2388				
NON-INSTRUCTIONAL SPACE												
		No. of Non-Instruct.	m2 per Non-Instruct.	Total		No. of Non-Instruct.	m2 per Non-Instruct.	Total		No. of Non-Instruct.	m2 per Non-Instruct.	Total
	Capacity	Spaces	Space	m2	Capacity	Spaces	Space	m2	Capacity	Spaces	Space	m2
Principal's Office	0	1	18.1	18.1	0	1	15	15	0	1	15	0
Vice Principal's Office	0	1	14.4	14.4	0	1	12	12	0	1	12	0
Other Administration Offices	0	1	10.6	10.6	0	4	10	40	0	4	10	29
General Office	0	1	52.5	52.5	0	1	70	70	0	1	70	18
Conference Room	0	0	0	0	0	1	70	70	0	1	20	70
Counselling Offices	0	1	12.9	12.9	0	7	10	70	0	7	10	57
Staff Lounge	0	1	71.3	71.3	0	1	65	65	0	0	65	0
Staff / Office Workroom	0	1	0	0	0	1	80	80	0	1	80	80
Men's Staff Washrooms	0	1	4	4	0	0	8	8	0	0	8	4
Women's Staff Washrooms	0	1	4	4	0	0	12	12	0	0	12	8
Infirmary	0	1	14	14	0	0	40	40	0	0	0	26
Kitchen	0	0	24.3	24.3	0	1	30	30	0	0	6	6
Mechanical Room	0	0	146.4	146.4	0	1	160	160	0	0	14	14
Student Change / Shower rooms	0	0	87.8	87.8	0	1	160	160	0	0	72	72
Physical Education Offices	0	2	21.7	21.7	0	1	40	40	0	0	18	18
Stud. Gath. Space	0	0	339.1	339.1	0	1	216	216	0	0	-123	0
Washrooms	0	0	106.6	106.6	0	1	108	108	0	0	5	5
Circulation	0	0	813.43	813.43	0	1	1340	1340	0	0	597	597
Walls	0	0	245	245.15	0	1	603	603	0	0	358	358
Storage, Custodian	0	0	111.1	111.1	0	1	176	176	0	0	65	65
Electrical	0	0	0	0	0	0	0	0	0	0	0	0
Total Non-instructional space					0	0	3225	3315	0	0	0	1427
Total Net instructional space					260	11	0	2042.9	935	38	0	2388
Total Gross Building Area / Student Capacity					260	11	0	4140.3	935	38	3225	8342
					675	19	0	3815				





YEAR TWO – PRIORITY ONE: New Spruce Grove/Stony Plain K-9 School

New K-9 school with a capacity of 900 students to serve both communities of Spruce Grove and Stony Plain at an estimated cost of \$22,028,425 million dollars

While completing Parkland School Division's system review of the facilities, boundaries and programs the Division amassed data that supports the need for a second new K-9 school to serve both communities of Spruce Grove and Stony Plain.

The projected enrolment numbers contained in Appendix B for both communities demonstrate the need for new facilities to service the communities. Both the City of Spruce Grove and the Town of Stony Plain continue to experience growth year over year. According to the 2011 Statistics Canada Census data the City of Spruce Grove experienced growth of 6.8% per year from 2006 to 2011 and the Town of Stony Plain experienced growth of 4.3% per year in the same time period.

While negotiating with the City of Spruce Grove for a new school site it was deemed that there are no designated school reserves on the western edge of Spruce Grove. The *Spruce Grove Long Range Enrolment and Number of Schools Analysis* completed by Parkland School Division indicated that two new K-9 schools would be required on the western side of Spruce Grove. Refer to Appendix C.

With the challenges of expected growth and the lack of designated school reserves, Parkland School Division developed a plan to build a school in Stony Plain that would serve both the western edge of Spruce Grove as well as the eastern edge of Stony Plain.

Parkland School Division is in the process of developing a long range enrolment and number of schools analysis for Stony Plain by the end of 2012. This document will be based on the Town's area structure plans and will clearly indicate the specific neighborhoods on the eastern edge of Stony Plain that will require additional schools. Discussions are currently underway with the Town of Stony Plain, the City of Spruce Grove and Parkland County to address the tri-community needs for new school spaces. The division anticipates having access to a designated school site in the required area by the fall of 2013.

Additionally, the Board is committed to actively pursue collaborative partnerships with Municipal, Education and Community partners.

YEAR TWO – PRIORITY TWO: Stony Plain Central Preservation, Modernization

Parkland School Division has identified Stony Plain Central School as a candidate for a complete preservation and modernization in order to accommodate 900 students at an estimated cost of \$9,179,130 million dollars.

The November 2010 facility audit completed by Alberta Infrastructure and the projected enrolment numbers in the Town of Stony Plain and the City of Spruce Grove support the need for this project.

With the proximity of the Town of Stony Plain and the City of Spruce Grove and the growth rates observed in the latest Statistics Canada Census Data (21.7% and 33.9% respectively) Parkland School Division anticipates having capacity problems throughout the area and safety concerns regarding traffic flow and emergency vehicle access.

The architectural firm of ONPA Architects was commissioned to develop a preliminary site plan that would allow Stony Plain Central School to house up to 900 students. The estimated cost of the proposed additions is \$4.2 million the estimated cost of the identified maintenance items and renovations is \$5.0 million for a total project cost of \$9.2 million.

The November 2010 Alberta Infrastructure facility audit on Stony Plain Central School identified \$3,540,208 of maintenance work that will be required to the site in the next ten years.

Alberta Infrastructure Audit: Maintenance

The maintenance work identified in the facility audit is broken down by years as follows:

2012	\$	164,847	2017	\$	107,730
2013	\$	0	2018	\$	122,500
2014	\$	0	2019	\$	58,850
2015	\$	3,399,371	2020	\$	132,935
2016	\$	0	2021	\$	76,995

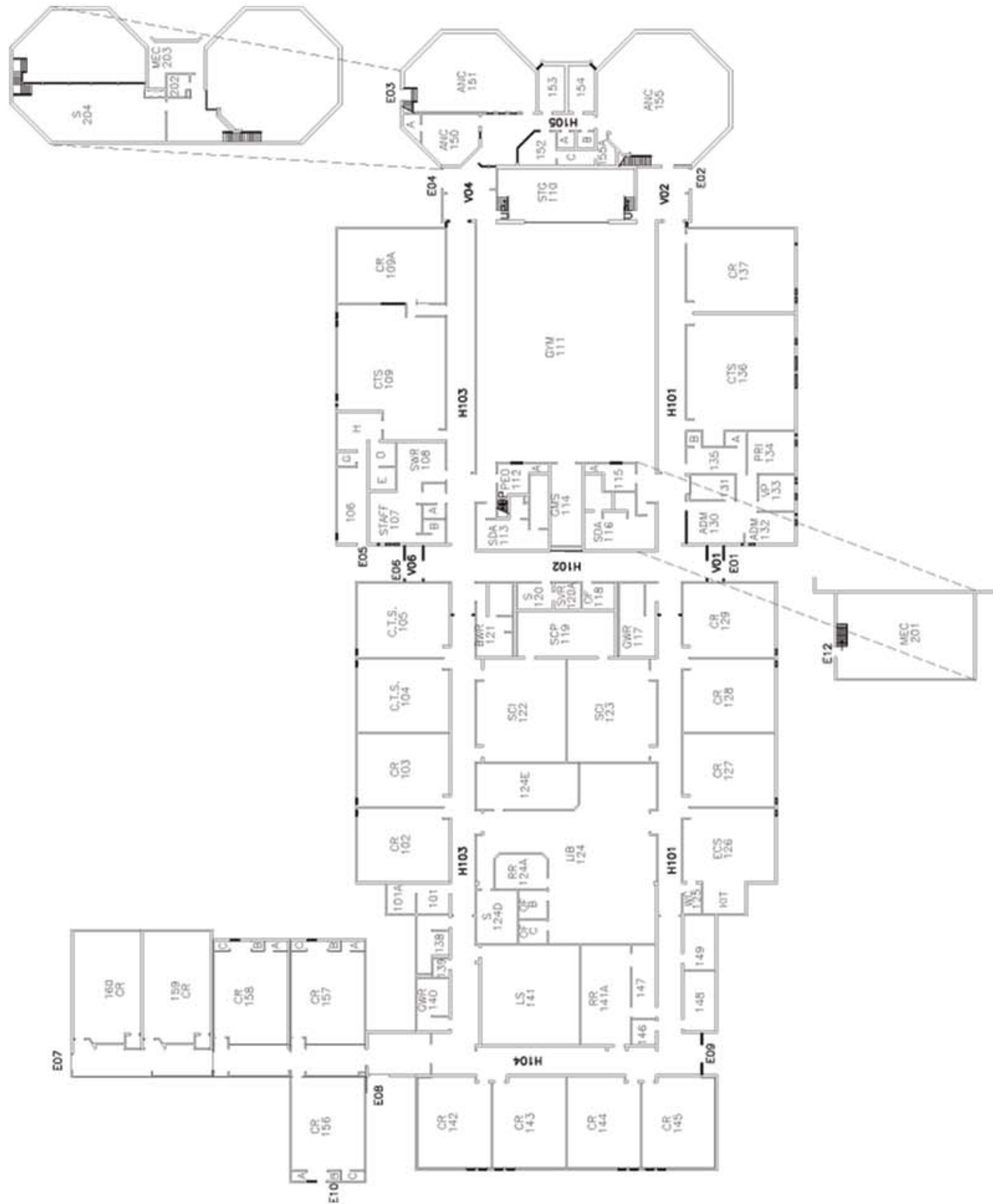
The full detailed audit can be provided on request.

ONPA Architects: Expansion

The highlights of the expansion include an addition of 966m² which would include a new gym, gym storage and two classrooms and a substantial upgrade to the site access. The interior of the school would be modified to provide better utilization of the core design.

This expansion would allow the school to meet the standards as set out by Alberta Education for a K-9 school of 900 students.

The attached maps provide two options for the proposed modernization. Both options include proposed changes to the site access and the second option includes maintenance and expansion to accommodate 900 students.



Upgrade of existing school.

Site Access Upgrade

Stony Plain Central
Upgrade to Existing 575 Student School
w/ Site Access Upgrade



Proposed Floor Plan - 900 Students



Existing Site Plan



Proposed Site Plan w/ Addition

Upgrade of existing school.
Partial renovation of existing school.
1,526m2 addition.

Site Access Upgrade

Stony Plain Central
Expansion to 900 Student School
w/ Site Access Upgrade



APPENDIX A

PARKLAND SEPTEMBER 30, 2011

ENROLMENTS BY SCHOOL/
BY GRADE

April 2012



Collaborate • Create • Learn

Enrolment Report at Sept 30, 2011

School Name	ECS	1	2	3	4	5	6	7	8	9	10	11	12	30/09/2011	09/30/10	09/30/09	09/30/08	09/28/07
Blueberry	50	55	39	53	54	49	53	54	59	52				518	500	494	486	473
Brookwood	111	136	104	118	90									559	539	493	517	450
Connections for Learning		10	16	14	13	16	10	15	16	22	13	17	14	163	176	94	117	135
Home Ed														13	10	6	12	12
Bright Bank Institutional		2		2	5	1	1	1						12	12	12	10	12
Duffield	14	25	23	21	27	33	31	31	44	44				293	312	313	289	313
École Broxton Park	155	91	67	70	66	56	53	44	44	46				692	685	657	628	620
French	56	61	40	38	38	28	18	14	11	16				320				
Maranatha	21	30	26	27	21	22	31	22	23	23				246				
Other	78		1	5	7	6	4	8	10	7				126				
École Meridian Heights	79	63	50	66	61	58	59	66	72	73				647	631	662	732	730
English	23	20	18	32	22	22	29	30	44	40				280				
French	56	43	32	34	39	36	30	36	28	33				367				
Entwistle	19	16	8	8	11	12	12	15	11	15				127	150	150	158	156
Forest Green	30	41	30	42	32	37	31							243	252	237	229	206
Graminia	52	51	43	40	50	55	40	68	61	48				508	505	523	506	522
Greystone Centennial Middle						110	96	105	101	86				498	482	500	475	465
High Park	34	51	34	42	40	46	45	54	45	38				429	440	419	386	369
Keephills	6	6	4	4	8	7	14							49	55	66	72	88
Memorial Composite High											415	372	365	1152	1104	1105	1150	1191
Millgrove	109	112	97	93	65									476	431	469	404	329
Muir Lake	37	35	30	40	35	46	50	48	44	38				403	442	531	520	552
Parkland Village	46	35	26	38	33									178	162	94	90	112
Seba Beach	11	6	7	17	15	10	10	15	14	20				125	136	148	161	189
Spruce Grove Composite High											326	337	353	1016	1057	1051	1010	1016
English											295	312	336	943				
French											31	25	17	73				
Stony Plain Central	36	28	25	26	25	35	37	72	79	71				434	465	487	472	489
Tomahawk	6	10	11	15	14	6	12	12	10	18				114	106	112	131	139
Wabamun	12	19	13	12	9	12	12	8	6	11				114	120	99	106	102
Woodhaven Middle						107	111	128	107	111				564	561	519	503	466
ECS - Grade 12 Enrolment	807	792	627	721	653	696	677	736	713	693	754	726	732	9327	9333	9241	9164	9136
Memorial Outreach											7	26	77	110	143	91	124	94
Spruce Comp Outreach											2	10	39	51	51	92	89	110
Outreach Programs											9	36	116	161	194	183	213	204
Total Registered Enrolment	807	792	627	721	653	696	677	736	713	693	763	762	848	9488	9527	9424	9377	9340
Projected Additional Outreach Enrolments*											8	65	61	134	78	0	36	2
Total Enrolment - Projected and Registered	807	792	627	721	653	696	677	736	713	693	771	827	909	9622	9605	9424	9413	9342

Enrolment Report at Sept 30, 2011

Enrolment - Community A

School Name	ECS	1	2	3	4	5	6	7	8	9	10	11	12	30/09/2011	09/30/10	09/30/09	09/30/08	09/28/07
Duffield	14	25	23	21	27	33	31	31	44	44				293	312	313	289	313
Entwistle	19	16	8	8	11	12	12	15	11	15				127	150	150	158	156
Keephills	6	6	4	4	8	7	14							49	55	66	72	88
Seba Beach	11	6	7	17	15	10	10	15	14	20				125	136	148	161	189
Tomahawk	6	10	11	15	14	6	12	12	10	18				114	106	112	131	139
Wabamun	12	19	13	12	9	12	12	8	6	11				114	120	99	106	102
Total Community A	68	82	66	77	84	80	91	81	85	108	0	0	0	822	879	888	917	987

Enrolment - Community B

School Name	ECS	1	2	3	4	5	6	7	8	9	10	11	12	30/09/2011	09/30/10	09/30/10	09/30/10	09/30/10
Connections for Learning		10	16	14	13	16	10	15	16	22	13	17	14	163	176	94	117	135
Home Ed														13	10	6	12	12
Bright Bank Institutional		2		2	5	1	1	1						12	12	12	10	12
Forest Green	30	41	30	42	32	37	31							243	252	237	229	206
High Park	34	51	34	42	40	46	45	54	45	38				429	440	419	386	369
Memorial Composite High											415	372	365	1152	1104	1105	1150	1191
Ecole Meridian Heights	79	63	50	66	61	58	59	66	72	73				647	631	662	732	730
Stony Plain Central	36	28	25	26	25	35	37	72	79	71				434	465	487	472	489
Stony Plain	179	195	155	192	176	193	183	208	212	204	428	389	379	3093	3090	3022	3108	3144
Muir Lake	37	35	30	40	35	46	50	48	44	38				403	442	531	520	552
Blueberry	50	55	39	53	54	49	53	54	59	52				518	500	494	486	473
Total Community B	266	285	224	285	265	288	286	310	315	294	428	389	379	4014	4032	4047	4114	4169

Enrolment - Community C

School Name	ECS	1	2	3	4	5	6	7	8	9	10	11	12	30/09/2011	09/30/10	09/30/10	09/30/10	09/30/10
Brookwood	111	136	104	118	90									559	539	493	517	450
Ecole Broxton Park	155	91	67	70	66	56	53	44	44	46				692	685	657	628	620
Greystone Centennial Middle						110	96	105	101	86				498	482	500	475	465
Millgrove	109	112	97	93	65									476	431	469	404	329
Spruce Grove Composite High											326	337	353	1016	1057	1051	1010	1016
Woodhaven Middle						107	111	128	107	111				564	561	519	503	466
Spruce Grove	375	339	268	281	221	273	260	277	252	243	326	337	353	3805	3755	3689	3537	3346
Graminia	52	51	43	40	50	55	40	68	61	48				508	505	523	506	522
Parkland Village	46	35	26	38	33									178	162	94	90	112
Total Community C	473	425	337	359	304	328	300	345	313	291	326	337	353	4491	4422	4306	4133	3980

Enrolment - Outreach Programs

School Name	ECS	1	2	3	4	5	6	7	8	9	10	11	12	30/09/2011	09/30/10	09/30/10	09/30/10	09/30/10
Memorial Outreach											7	26	77	110	143	91	124	94
Spruce Comp Outreach											2	10	39	51	51	92	89	110
Projected Additional Outreach Enrolments											8	65	61	134	78	0	36	2
Total Outreach											17	101	177	295	272	183	249	206

Total Enrolments	807	792	627	721	653	696	677	736	713	693	771	827	909	9622	9605	9424	9413	9342
-------------------------	------------	------------	------------	------------	------------	------------	------------	------------	------------	------------	------------	------------	------------	-------------	-------------	-------------	-------------	-------------

APPENDIX B

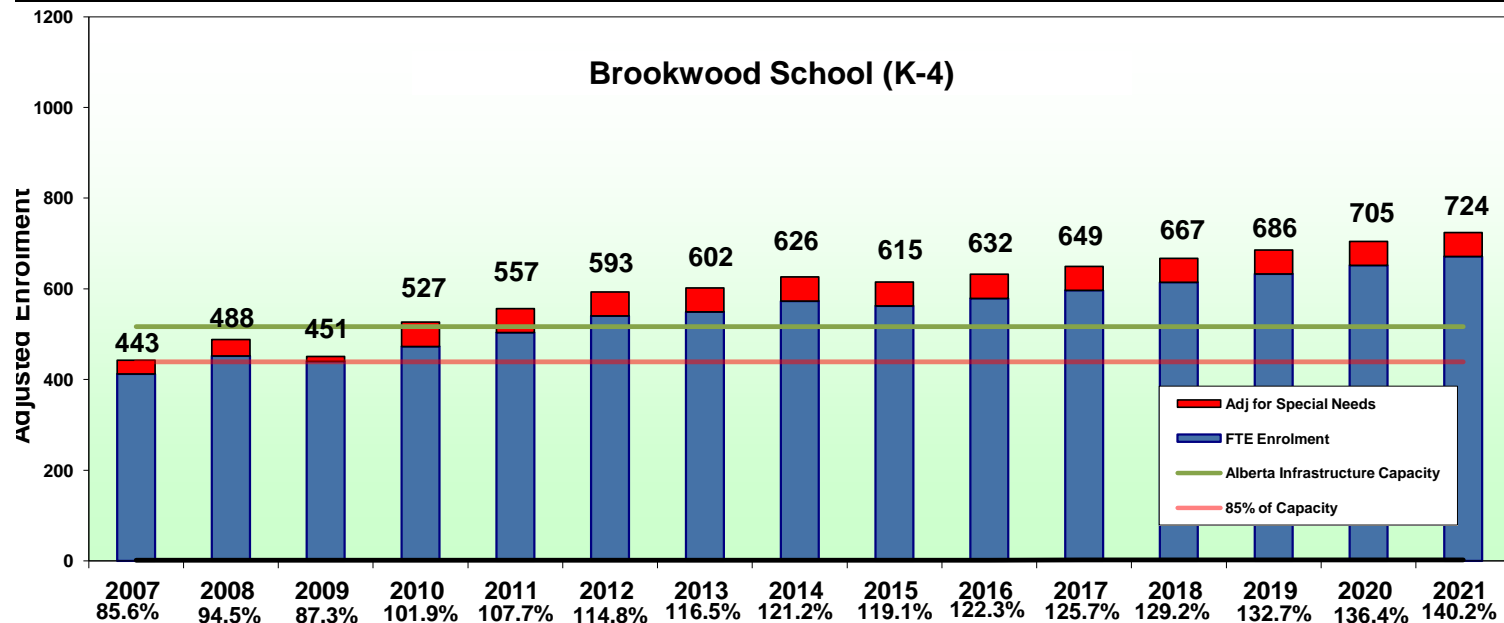
PARKLAND PROJECTED 10 YEAR ENROLMENTS BY SCHOOL

April 2012



Collaborate • Create • Learn

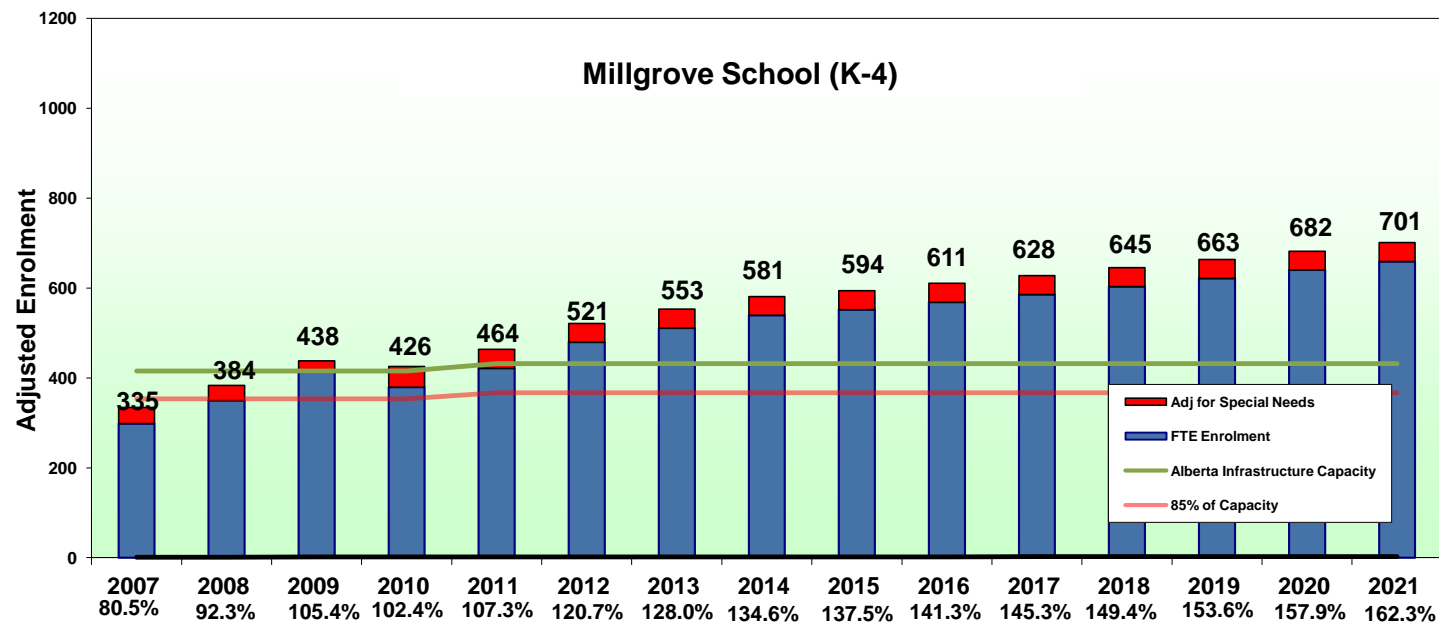
Brookwood															
5 YEAR HISTORICAL ENROLMENTS						10 YEAR PROJECTED ENROLMENTS									
GRADE	2007	2008	2009	2010	2011	2012	2013	2014	2015	2016	2017	2018	2019	2020	2021
K (actual)	89	126	106	133	111	114	118	121	125	129	133	137	141	145	149
K (fte)	44.5	63.0	53.0	66.5	55.5	57.2	58.9	60.6	62.5	64.3	66.3	68.3	70.3	72.4	74.6
1	95	95	111	104	136	114	118	121	125	129	133	137	141	145	149
2	99	97	78	119	104	140	118	121	125	129	133	137	141	145	149
3	95	96	99	79	118	107	144	121	125	129	133	137	141	145	149
4	79	101	99	104	90	122	110	149	125	129	133	137	141	145	149
5															
6															
7															
8															
9															
10															
11															
12															
FTE Enrolment	413	452	440	473	504	540	549	573	562	579	596	614	633	652	671
# of Special Ed (Severe)	15	16	8	18	22	22	22	22	22	22	22	22	22	22	22
Regular FTE Enrolment	398	440	427	455	482	518	527	551	540	557	574	592	611	630	649
CLICK Special Program		10	10	12	6	6	6	6	6	6	6	6	6	6	6
Student Allowance Factor	45	63	39	72	75	75	75	75	75	75	75	75	75	75	75
Adjusted Enrolment	443	488	451	527	557	593	602	626	615	632	649	667	686	705	724
"Utilization Rate"	85.6%	94.5%	87.3%	101.9%	107.7%	114.8%	116.5%	121.2%	119.1%	122.3%	125.7%	129.2%	132.7%	136.4%	140.2%
Net Capacity	517	517	517	517	517	517	517	517	517	517	517	517	517	517	517
85% Capacity	439	439	439	439	439	439	439	439	439	439	439	439	439	439	439
% Change	6%	10%	-8%	17%	6%	7%	1%	4%	-2%	3%	3%	3%	3%	3%	3%
Spaces available	-3	-49	-12	-87	-117	-154	-163	-187	-176	-193	-210	-228	-247	-266	-285



Notes:

- Enrolment projections October 18 2011
- Capacity includes December 2010 core portable movements
- % indicates Utilization Rate of Building

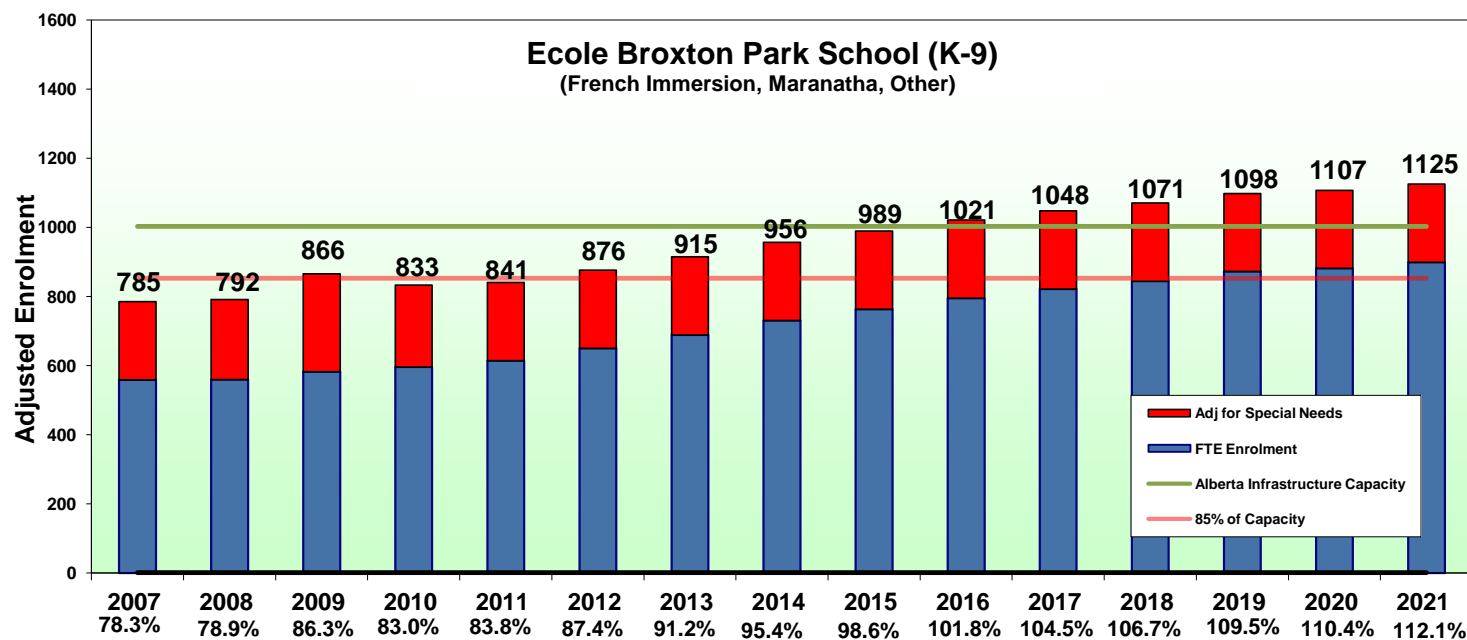
Millgrove															
5 YEAR HISTORICAL ENROLMENTS						10 YEAR PROJECTED ENROLMENTS									
GRADE	2007	2008	2009	2010	2011	2012	2013	2014	2015	2016	2017	2018	2019	2020	2021
K (actual)	61	109	112	103	109	112	116	119	123	126	130	134	138	142	146
K (fte)	30.5	54.5	56.0	51.5	54.5	56.1	57.8	59.6	61.3	63.2	65.1	67.0	69.0	71.1	73.2
1	65	68	119	98	112	112	116	119	123	126	130	134	138	142	146
2	65	64	74	88	97	115	116	119	123	126	130	134	138	142	146
3	76	84	73	64	93	100	119	119	123	126	130	134	138	142	146
4	62	79	91	78	65	96	103	122	123	126	130	134	138	142	146
5															
6															
7															
8															
9															
10															
11															
12															
FTE Enrolment	299	350	413	380	422	479	511	539	552	569	586	603	621	640	659
# of Special Ed (Severe)	18	14	12	23	21	21	21	21	21	21	21	21	21	21	21
Regular FTE Enrolment	281	342	402	357	401	458	490	518	531	548	565	582	600	619	638
CLICK Special Program															
Student Allowance Factor	54	42	36	69	63	63	63	63	63	63	63	63	63	63	63
Adjusted Enrolment	335	384	438	426	464	521	553	581	594	611	628	645	663	682	701
"Utilization Rate"	80.5%	92.3%	105.4%	102.4%	107.3%	120.7%	128.0%	134.6%	137.5%	141.3%	145.3%	149.4%	153.6%	157.9%	162.3%
Net Capacity	416	416	416	416	432	432	432	432	432	432	432	432	432	432	432
85% Capacity	353	353	353	353	367	367	367	367	367	367	367	367	367	367	367
% Change	1%	15%	14%	-3%	5%	13%	6%	5%	2%	3%	3%	3%	3%	3%	3%
Spaces available	19	-30	-85	-72	-96	-154	-186	-214	-227	-243	-260	-278	-296	-315	-334



Notes:

- Enrolment projections October 18 2011
- Capacity includes December 2010 core portable movements
- % indicates Utilization Rate of Building

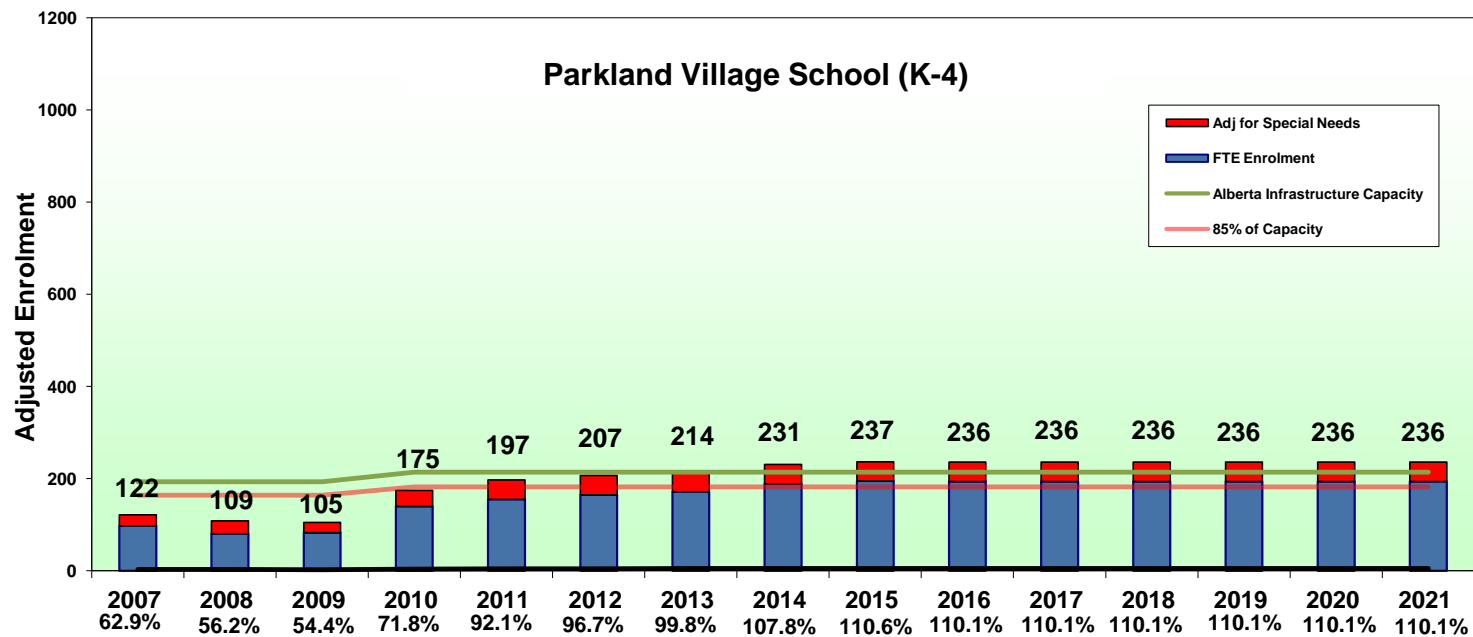
École Broxton Park															
5 YEAR HISTORICAL ENROLMENTS						10 YEAR PROJECTED ENROLMENTS									
GRADE	2007	2008	2009	2010	2011	2012	2013	2014	2015	2016	2017	2018	2019	2020	2021
K (actual)	118	137	149	178	155	157	158	160	162	164	166	168	170	172	174
K (fte)	59.0	68.5	74.5	89.0	77.5	78.3	79.2	80.1	81.0	82.0	82.9	83.9	85.0	86.0	87.1
1	57	60	73	67	91	83	85	87	89	91	92	94	96	98	101
2	55	59	63	73	67	93	85	87	88	90	92	94	96	98	100
3	62	58	56	63	70	65	89	82	83	85	87	88	90	92	94
4	49	58	57	55	66	71	66	91	83	85	87	89	91	92	94
5	57	45	55	52	56	65	71	65	90	83	84	86	88	90	91
6	64	53	44	47	53	55	64	69	64	87	80	82	83	85	87
7	60	59	54	44	44	53	55	65	70	64	89	81	83	85	86
8	51	56	57	53	44	44	53	55	64	69	64	87	80	82	83
9	45	43	49	53	46	42	42	51	51	59	64	59	80	73	74
10															
11															
12															
FTE Enrolment	559	560	583	596	615	650	689	730	763	795	822	845	872	881	899
# of Special Ed (Severe)	113	117	134	152	134	134	134	134	134	134	134	134	134	134	134
Regular FTE Enrolment	446	441	464	444	481	516	555	596	629	661	688	711	738	747	765
CLICK Special Program		-10	-10	-45	-28	-28	-28	-28	-28	-28	-28	-28	-28	-28	-28
Student Allowance Factor	339	336	387	389	360	360	360	360	360	360	360	360	360	360	360
Adjusted Enrolment	785	792	866	833	841	876	915	956	989	1021	1048	1071	1098	1107	1125
"Utilization Rate"	78.3%	78.9%	86.3%	83.0%	83.8%	87.4%	91.2%	95.4%	98.6%	101.8%	104.5%	106.7%	109.5%	110.4%	112.1%
Net Capacity	1003	1003	1003	1003	1003	1003	1003	1003	1003	1003	1003	1003	1003	1003	1003
85% Capacity	853	853	853	853	853	853	853	853	853	853	853	853	853	853	853
% Change	6%	1%	9%	-4%	1%	4%	4%	5%	3%	3%	3%	2%	3%	1%	2%
Spaces available	68	61	-13	20	12	-24	-62	-104	-137	-169	-195	-218	-245	-255	-272



Notes:

- Enrolment projections October 18 2011
- Capacity includes December 2010 core portable movements
- % indicates Utilization Rate of Building

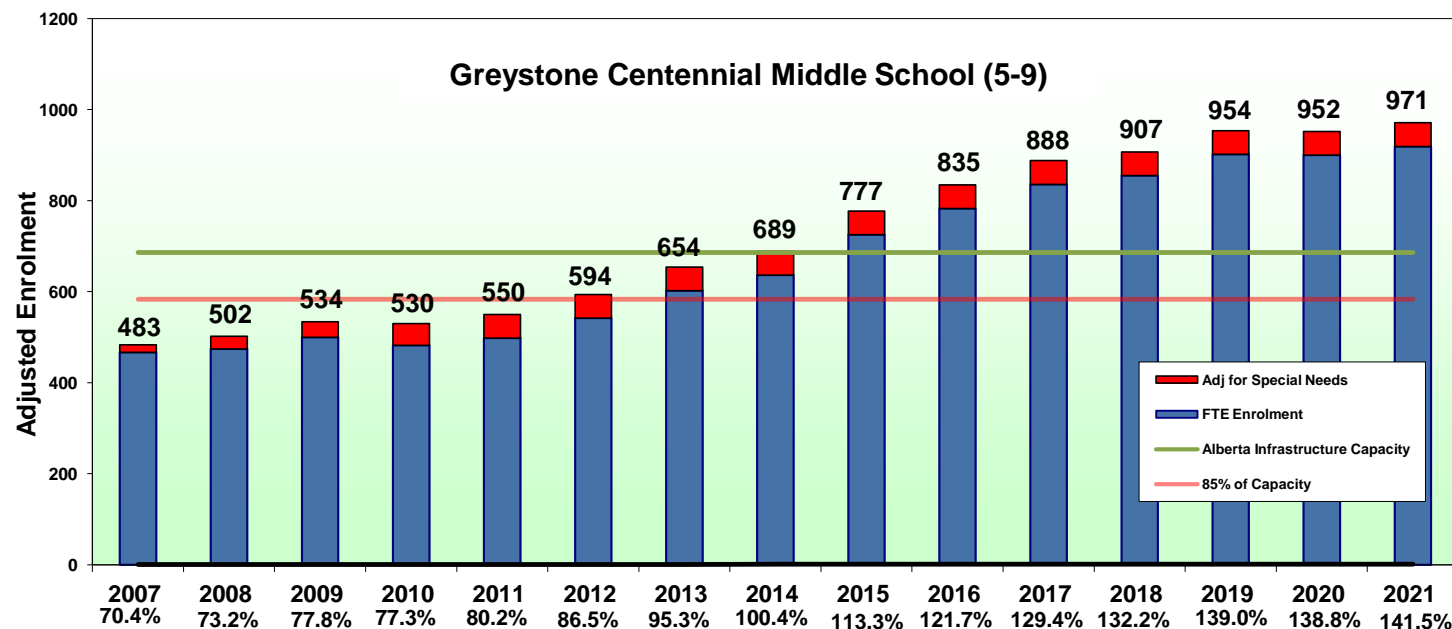
Parkland Village															
5 YEAR HISTORICAL ENROLMENTS						10 YEAR PROJECTED ENROLMENTS									
GRADE	2007	2008	2009	2010	2011	2012	2013	2014	2015	2016	2017	2018	2019	2020	2021
K (actual)	35	19	22	45	46	45	45	45	45	45	45	45	45	45	45
K (fte)	17.5	9.5	11.0	22.5	23.0	22.5	22.5	22.5	22.5	22.5	22.5	22.5	22.5	22.5	22.5
1	27	17	19	23	35	41	41	41	41	41	41	41	41	41	41
2	12	24	19	33	26	37	43	43	43	43	43	43	43	43	43
3	19	10	26	35	38	27	39	46	45	45	45	45	45	45	45
4	22	20	8	26	33	37	27	38	44	43	43	43	43	43	43
5															
6															
7															
8															
9															
10															
11															
12															
FTE Enrolment	98	81	83	140	155	165	172	189	195	194	194	194	194	194	194
# of Special Ed (Severe)	12	14	11	13	18	18	18	18	18	18	18	18	18	18	18
Regular FTE Enrolment	86	67	72	127	137	147	154	171	177	176	176	176	176	176	176
CLICK Special Program				6	4	4	4	4	4	4	4	4	4	4	4
Student Allowance Factor	36	42	33	48	60	60	60	60	60	60	60	60	60	60	60
Adjusted Enrolment	122	109	105	175	197	207	214	231	237	236	236	236	236	236	236
"Utilization Rate"	62.9%	56.2%	54.4%	71.8%	92.1%	96.7%	99.8%	107.8%	110.6%	110.1%	110.1%	110.1%	110.1%	110.1%	110.1%
Net Capacity	193	193	193	214	214	214	214	214	214	214	214	214	214	214	214
85% Capacity	164	164	164	182	182	182	182	182	182	182	182	182	182	182	182
% Change	17%	-11%	-3%	32%	28%	5%	3%	8%	3%	0%	0%	0%	0%	0%	0%
Spaces available	43	56	59	32	-15	-25	-32	-49	-55	-54	-54	-54	-54	-54	-54



Notes:

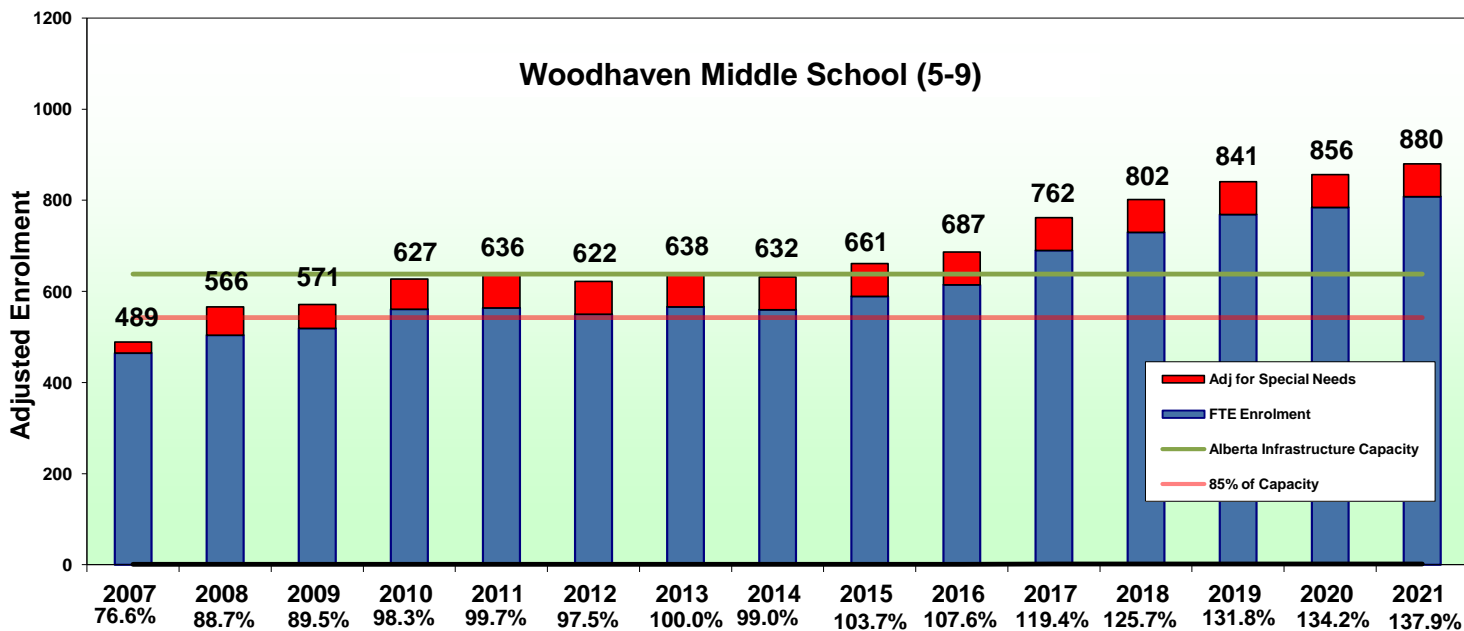
- Enrolment projections October 18 2011
- Capacity includes December 2010 core portable movements
- % indicates Utilization Rate of Building

Greystone Centennial Middle															
5 YEAR HISTORICAL ENROLMENTS						10 YEAR PROJECTED ENROLMENTS									
GRADE	2007	2008	2009	2010	2011	2012	2013	2014	2015	2016	2017	2018	2019	2020	2021
K (actual)															
K (fte)															
1															
2															
3															
4															
5	59	80	94	94	110	117	151	131	178	163	166	169	173	177	181
6	89	70	95	100	96	113	121	156	135	183	168	171	175	178	182
7	107	98	82	102	105	99	117	124	161	139	188	173	176	180	184
8	105	116	108	81	101	108	102	120	128	165	143	194	178	181	185
9	107	110	121	105	86	104	111	105	124	132	170	148	200	184	187
10															
11															
12															
FTE Enrolment	467	474	500	482	498	542	602	637	725	783	836	855	902	900	919
# of Special Ed (Severe)	8	14	17	24	26	26	26	26	26	26	26	26	26	26	26
Regular FTE Enrolment	459	460	483	458	472	516	576	611	699	757	810	829	876	874	893
CLICK Special Program															
Student Allowance Factor	24	42	51	72	78	78	78	78	78	78	78	78	78	78	78
Adjusted Enrolment	483	502	534	530	550	594	654	689	777	835	888	907	954	952	971
"Utilization Rate"	70.4%	73.2%	77.8%	77.3%	80.2%	86.5%	95.3%	100.4%	113.3%	121.7%	129.4%	132.2%	139.0%	138.8%	141.5%
Net Capacity	686	686	686	686	686	686	686	686	686	686	686	686	686	686	686
85% Capacity	583	583	583	583	583	583	583	583	583	583	583	583	583	583	583
% Change	-12%	4%	6%	-1%	4%	8%	10%	5%	13%	7%	6%	2%	5%	0%	2%
Spaces available	100	81	49	53	33	-11	-71	-105	-194	-252	-305	-324	-371	-369	-388



Notes:
 - Enrolment projections October 18 2011
 - Capacity includes December 2010 core portable movements
 - % indicates Utilization Rate of Building

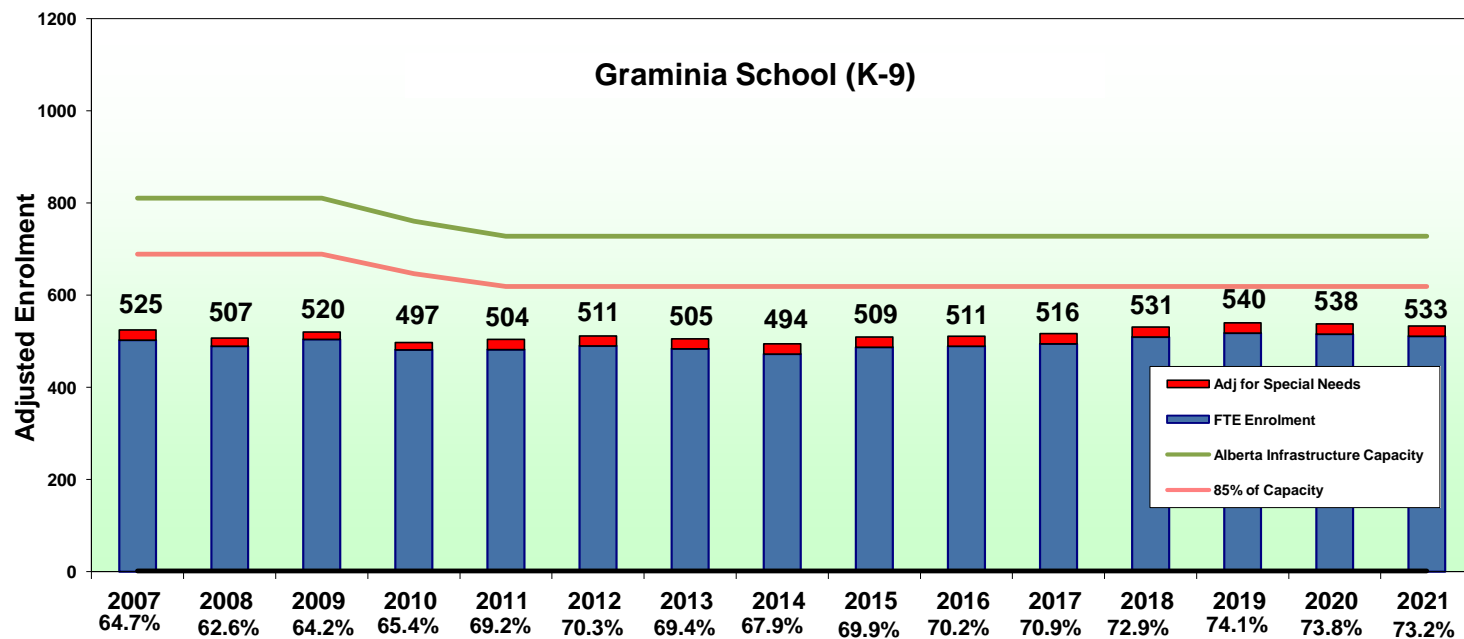
Woodhaven Middle															
5 YEAR HISTORICAL ENROLMENTS						10 YEAR PROJECTED ENROLMENTS									
GRADE	2007	2008	2009	2010	2011	2012	2013	2014	2015	2016	2017	2018	2019	2020	2021
K (actual)															
K (fte)															
1															
2															
3															
4															
5	92	93	110	109	107	73	106	112	135	133	137	141	145	150	154
6	84	101	95	125	111	114	77	113	119	143	141	145	150	154	159
7	82	97	102	108	128	117	120	81	119	125	151	148	153	158	162
8	97	100	101	110	107	133	121	124	85	123	130	157	154	159	164
9	110	113	111	109	111	114	142	129	132	90	131	138	167	164	169
10															
11															
12															
FTE Enrolment	465	504	519	561	564	550	566	560	589	615	690	730	769	784	808
# of Special Ed (Severe)	12	31	26	33	36	36	36	36	36	36	36	36	36	36	36
Regular FTE Enrolment	453	473	493	528	528	514	530	524	553	579	654	694	733	748	772
CLICK Special Program															
Student Allowance Factor	36	93	78	99	108	108	108	108	108	108	108	108	108	108	108
Adjusted Enrolment	489	566	571	627	636	622	638	632	661	687	762	802	841	856	880
"Utilization Rate"	76.6%	88.7%	89.5%	98.3%	99.7%	97.5%	100.0%	99.0%	103.7%	107.6%	119.4%	125.7%	131.8%	134.2%	137.9%
Net Capacity	638	638	638	638	638	638	638	638	638	638	638	638	638	638	638
85% Capacity	542	542	542	542	542	542	542	542	542	542	542	542	542	542	542
% Change	-11%	16%	1%	10%	1%	-2%	3%	-1%	5%	4%	11%	5%	5%	2%	3%
Spaces available	53	-24	-29	-85	-94	-80	-96	-89	-119	-144	-220	-260	-299	-314	-337



Notes:

- Enrolment projections October 18 2011
- Capacity includes December 2010 core portable movements
- % indicates Utilization Rate of Building

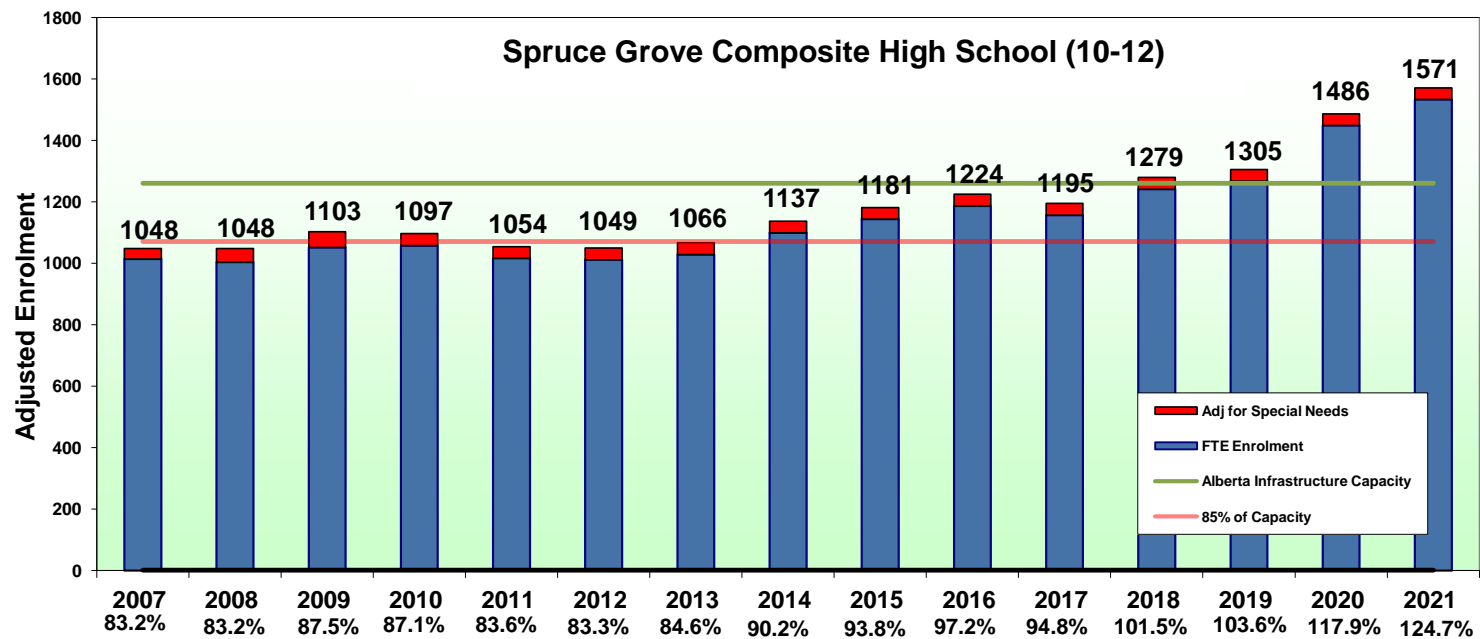
Graminia															
5 YEAR HISTORICAL ENROLMENTS						10 YEAR PROJECTED ENROLMENTS									
GRADE	2007	2008	2009	2010	2011	2012	2013	2014	2015	2016	2017	2018	2019	2020	2021
K (actual)	39	34	38	48	52	48	48	48	48	48	48	48	48	48	48
K (fte)	19.5	17.0	19.0	24.0	26.0	24.0	24.0	24.0	24.0	24.0	24.0	24.0	24.0	24.0	24.0
1	50	41	35	39	51	53	49	49	49	49	49	49	49	49	49
2	31	51	47	37	43	54	56	51	51	51	51	51	51	51	51
3	56	32	55	48	40	46	57	59	54	54	54	54	54	54	54
4	57	54	38	54	50	41	46	58	60	56	56	56	56	56	56
5	53	59	64	41	55	51	42	47	59	61	57	57	57	57	57
6	55	54	65	61	40	53	49	40	46	57	59	54	54	54	54
7	64	57	57	63	68	41	55	51	42	47	59	61	57	57	57
8	58	63	61	47	61	65	40	52	49	40	45	56	58	54	54
9	59	61	63	67	48	62	66	40	53	50	40	46	57	60	55
10															
11															
12															
FTE Enrolment	503	489	504	481	482	489	483	472	487	489	494	509	518	516	511
# of Special Ed (Severe)	11	9	8	8	11	11	11	11	11	11	11	11	11	11	11
Regular FTE Enrolment	492	480	496	473	471	478	472	461	476	478	483	498	507	505	500
CLICK Special Program															
Student Allowance Factor	33	27	24	24	33	33	33	33	33	33	33	33	33	33	33
Adjusted Enrolment	525	507	520	497	504	511	505	494	509	511	516	531	540	538	533
"Utilization Rate"	64.7%	62.6%	64.2%	65.4%	69.2%	70.3%	69.4%	67.9%	69.9%	70.2%	70.9%	72.9%	74.1%	73.8%	73.2%
Net Capacity	811	811	811	761	728	728	728	728	728	728	728	728	728	728	728
85% Capacity	689	689	689	646	619	619	619	619	619	619	619	619	619	619	619
% Change	-9%	-3%	3%	2%	6%	1%	-1%	-2%	3%	0%	1%	3%	2%	0%	-1%
Spaces available	164	182	169	149	115	107	114	125	110	108	102	88	79	81	86



Notes:

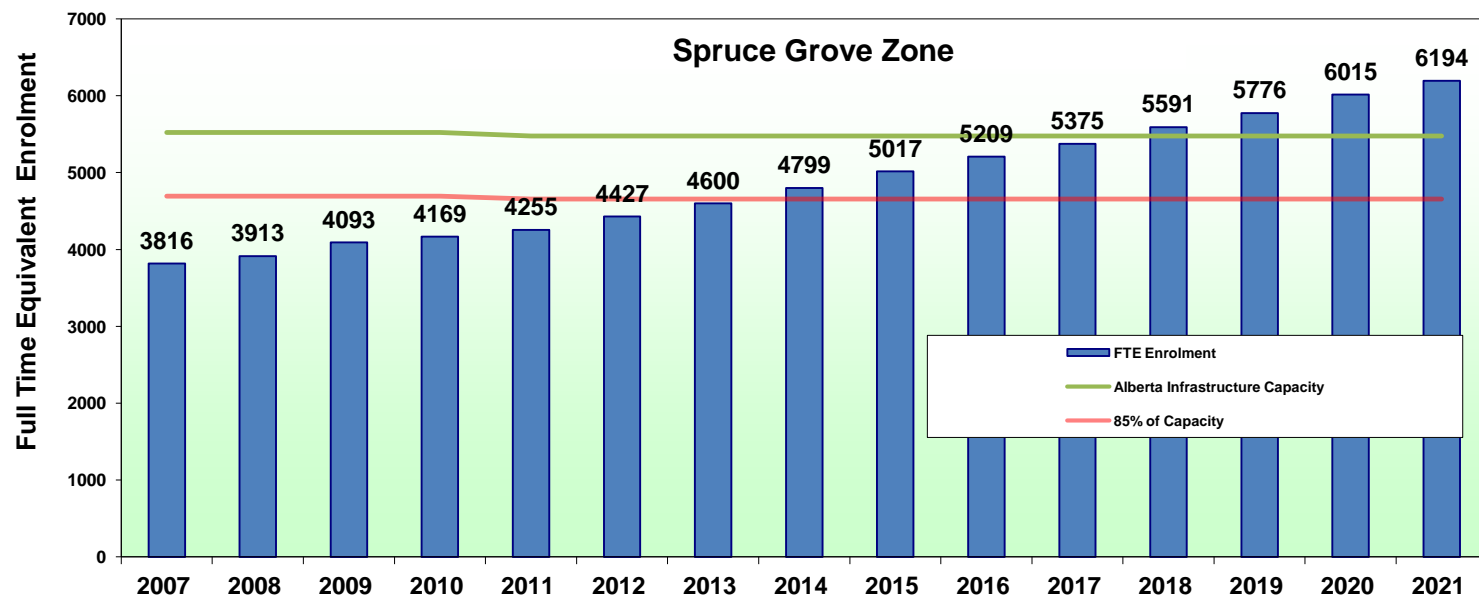
- Enrolment projections October 18 2011
- Capacity includes December 2010 core portable movements
- % indicates Utilization Rate of Building

Spruce Grove Composite High															
5 YEAR HISTORICAL ENROLMENTS						10 YEAR PROJECTED ENROLMENTS									
GRADE	2007	2008	2009	2010	2011	2012	2013	2014	2015	2016	2017	2018	2019	2020	2021
K (actual)															
K (fte)															
1															
2															
3															
4															
5															
6															
7															
8															
9															
10	346	338	350	357	326	321	355	395	361	396	370	444	425	543	532
11	335	312	341	338	337	326	321	357	396	361	396	369	444	425	542
12	333	354	360	362	353	365	352	347	387	429	391	428	398	480	459
FTE Enrolment	1014	1004	1051	1057	1016	1011	1028	1099	1143	1186	1157	1241	1267	1448	1533
# of Special Ed (Severe)	17	22	26	20	19	19	19	19	19	19	19	19	19	19	19
Regular FTE Enrolment	997	982	1025	1037	997	992	1009	1080	1124	1167	1138	1222	1248	1429	1514
CLICK Special Program															
Student Allowance Factor	51	66	78	60	57	57	57	57	57	57	57	57	57	57	57
Adjusted Enrolment	1048	1048	1103	1097	1054	1049	1066	1137	1181	1224	1195	1279	1305	1486	1571
"Utilization Rate"	83.2%	83.2%	87.5%	87.1%	83.6%	83.3%	84.6%	90.2%	93.8%	97.2%	94.8%	101.5%	103.6%	117.9%	124.7%
Net Capacity	1260	1260	1260	1260	1260	1260	1260	1260	1260	1260	1260	1260	1260	1260	1260
85% Capacity	1071	1071	1071	1071	1071	1071	1071	1071	1071	1071	1071	1071	1071	1071	1071
% Change	0%	0%	5%	-1%	-4%	0%	2%	7%	4%	4%	-2%	7%	2%	14%	6%
Spaces available	23	23	-32	-26	17	22	5	-66	-110	-153	-124	-208	-234	-415	-500



Notes:
 - Enrolment projections October 18 2011
 - Capacity includes December 2010 core portable movements
 - % indicates Utilization Rate of Building

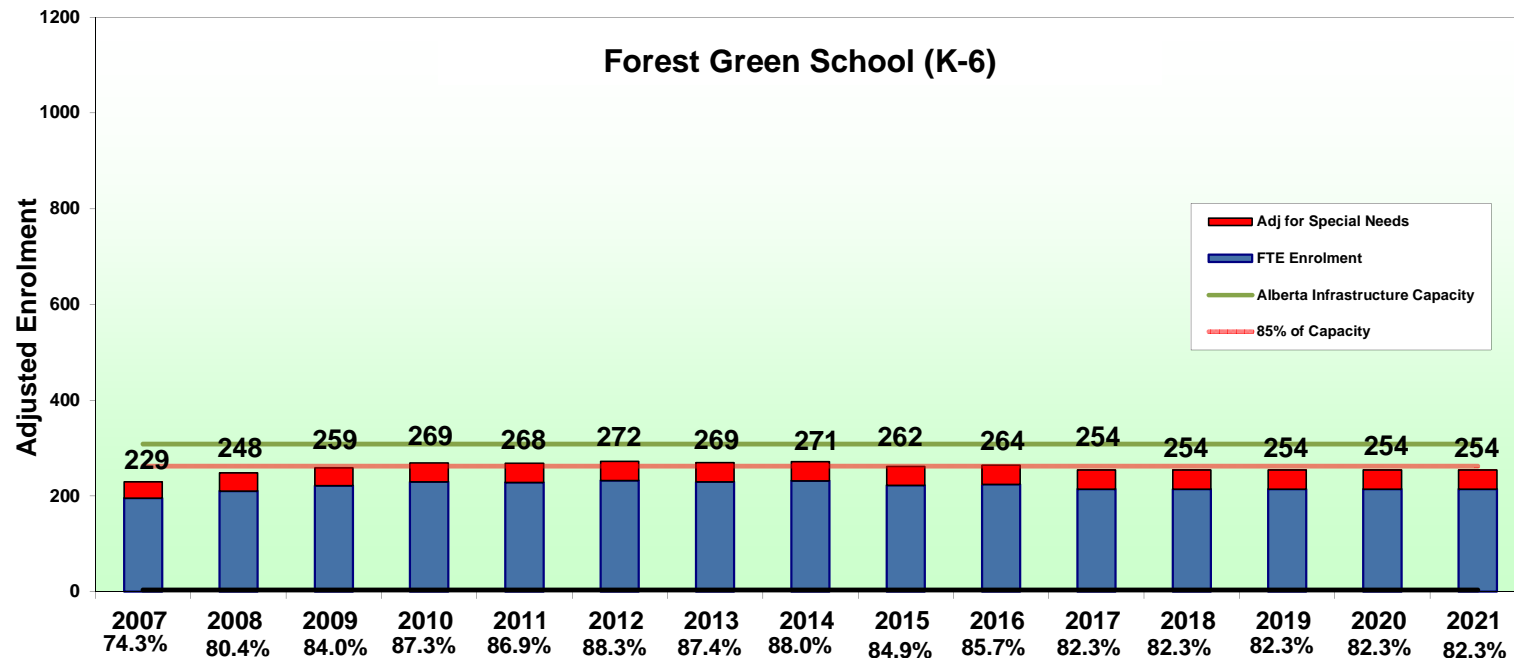
Spruce Grove Zone															
	5 YEAR HISTORICAL ENROLMENTS					10 YEAR PROJECTED ENROLMENTS									
GRADE	2007	2008	2009	2010	2011	2012	2013	2014	2015	2016	2017	2018	2019	2020	2021
K (actual)	342	425	427	507	473	476	485	494	503	512	522	531	542	552	563
K (fte)	171.0	212.5	213.5	253.5	236.5	238.1	242.4	246.8	251.3	256.0	260.8	265.7	270.8	276.1	281.5
1	294	281	357	331	425	404	408	417	426	435	445	454	465	475	486
2	262	295	281	350	337	438	417	421	430	439	449	459	469	479	490
3	308	280	309	289	359	345	447	427	430	439	448	458	468	478	489
4	269	312	293	317	304	366	352	457	436	439	449	458	468	478	489
5	261	277	323	296	328	307	370	356	462	440	443	453	463	473	483
6	292	278	299	333	300	334	311	378	363	470	448	452	462	472	482
7	313	311	295	317	345	311	346	321	391	376	487	464	468	478	489
8	311	335	327	291	313	350	316	352	325	397	382	495	471	476	486
9	321	327	344	334	291	323	361	325	361	331	406	391	504	480	485
10	346	338	350	357	326	321	355	395	361	396	370	444	425	543	532
11	335	312	341	338	337	326	321	357	396	361	396	369	444	425	542
12	333	354	360	362	353	365	352	347	387	429	391	428	398	480	459
FTE Enrolment	3816	3913	4093	4169	4255	4427	4600	4799	5017	5209	5375	5591	5776	6015	6194
# of Special Ed (Severe)	206	237	242	291	287	287	287	287	287	287	287	287	287	287	287
Regular FTE Enrolment	3610	3676	3851	3878	3968	4140	4313	4512	4730	4922	5088	5304	5489	5728	5907
CLICK Special Program	0	0	0	-27	-18	-18	-18	-18	-18	-18	-18	-18	-18	-18	-18
Student Allowance Factor	618	711	726	833	834	834	834	834	834	834	834	834	834	834	834
Adjusted Enrolment	4228	4387	4577	4670	4802	4974	5147	5346	5564	5756	5922	6138	6323	6562	6741
"Utilization Rate"	76.6%	79.4%	82.9%	84.5%	87.7%	90.8%	94.0%	97.6%	101.6%	105.1%	108.1%	112.0%	115.4%	119.8%	123.1%
Net Capacity	5523	5523	5523	5523	5478	5478	5478	5478	5478	5478	5478	5478	5478	5478	5478
85% Capacity	4695	4695	4695	4695	4656	4656	4656	4656	4656	4656	4656	4656	4656	4656	4656
% Change	-3%	4%	4%	2%	4%	4%	3%	4%	4%	3%	3%	4%	3%	4%	3%
Spaces available	467	308	118	25	-145	-318	-491	-690	-908	-1100	-1265	-1482	-1666	-1905	-2084



Notes:

- Enrolment projections March 2010 updated with September 30, 2010 cohort movement
- Capacity includes December 2010 core portable movements
- Capacity explanation in handout

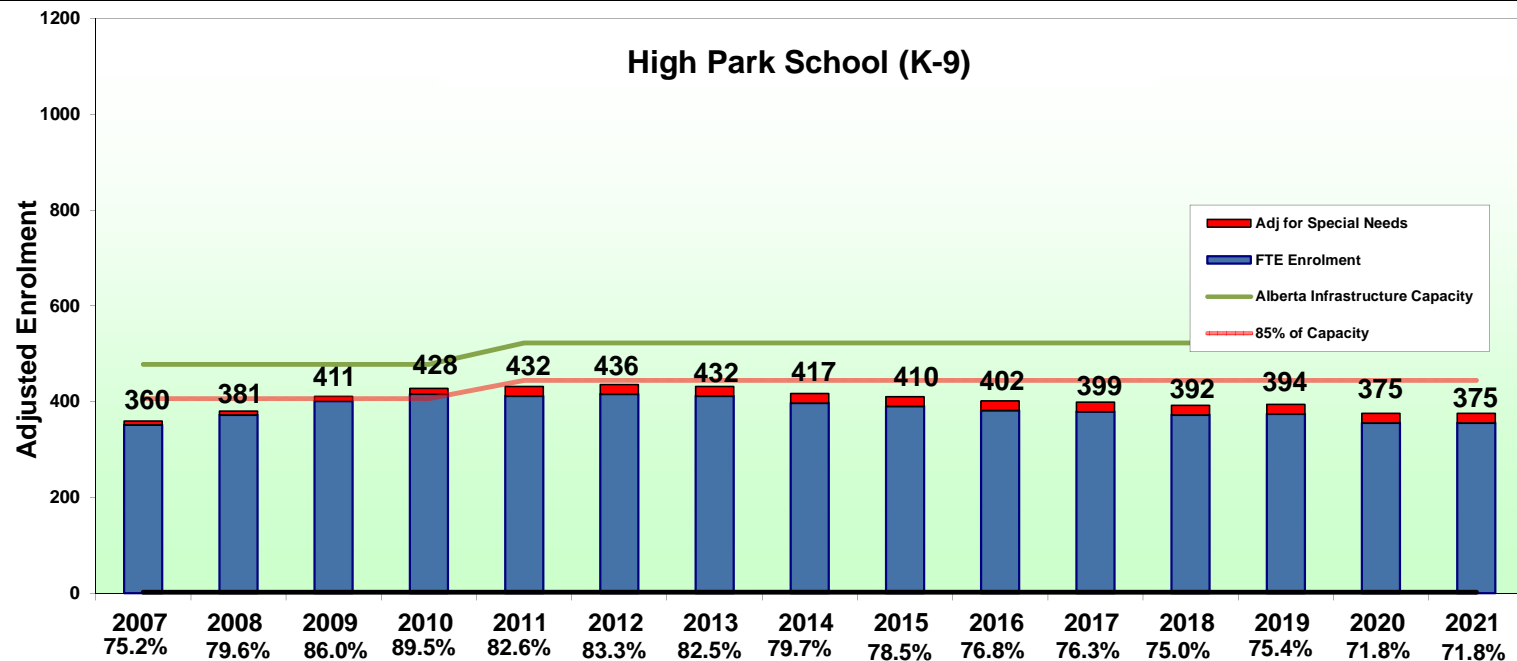
Forest Green															
5 YEAR HISTORICAL ENROLMENTS						10 YEAR PROJECTED ENROLMENTS									
GRADE	2007	2008	2009	2010	2011	2012	2013	2014	2015	2016	2017	2018	2019	2020	2021
K (actual)	22	38	32	46	30	30	30	30	30	30	30	30	30	30	30
K (fte)	11.0	19.0	16.0	23.0	15.0	15.0	15.0	15.0	15.0	15.0	15.0	15.0	15.0	15.0	15.0
1	26	31	41	35	41	32	32	32	32	32	32	32	32	32	32
2	29	32	32	38	30	42	32	32	32	32	32	32	32	32	32
3	34	32	34	35	42	31	43	33	33	33	33	33	33	33	33
4	33	33	32	36	32	43	31	44	33	33	33	33	33	33	33
5	34	35	28	31	37	33	44	32	44	34	34	34	34	34	34
6	28	28	38	31	31	38	33	45	32	45	35	35	35	35	35
7															
8															
9															
10															
11															
12															
FTE Enrolment	195	210	221	229	228	232	229	231	222	224	214	214	214	214	214
# of Special Ed (Severe)	17	19	19	20	20	20	20	20	20	20	20	20	20	20	20
Regular FTE Enrolment	178	191	202	209	208	212	209	211	202	204	194	194	194	194	194
CLICK Special Program															
Student Allowance Factor	51	57	57	60	60	60	60	60	60	60	60	60	60	60	60
Adjusted Enrolment	229	248	259	269	268	272	269	271	262	264	254	254	254	254	254
"Utilization Rate"	74.3%	80.4%	84.0%	87.3%	86.9%	88.3%	87.4%	88.0%	84.9%	85.7%	82.3%	82.3%	82.3%	82.3%	82.3%
Net Capacity	308	308	308	308	308	308	308	308	308	308	308	308	308	308	308
85% Capacity	262	262	262	262	262	262	262	262	262	262	262	262	262	262	262
% Change	-12%	8%	4%	4%	0%	2%	-1%	1%	-4%	1%	-4%	0%	0%	0%	0%
Spaces available	33	14	3	-7	-6	-10	-7	-9	0	-2	8	8	8	8	8



Notes:

- Enrolment projections October 18 2011
- Capacity includes December 2010 core portable movements
- % indicates Utilization Rate of Building

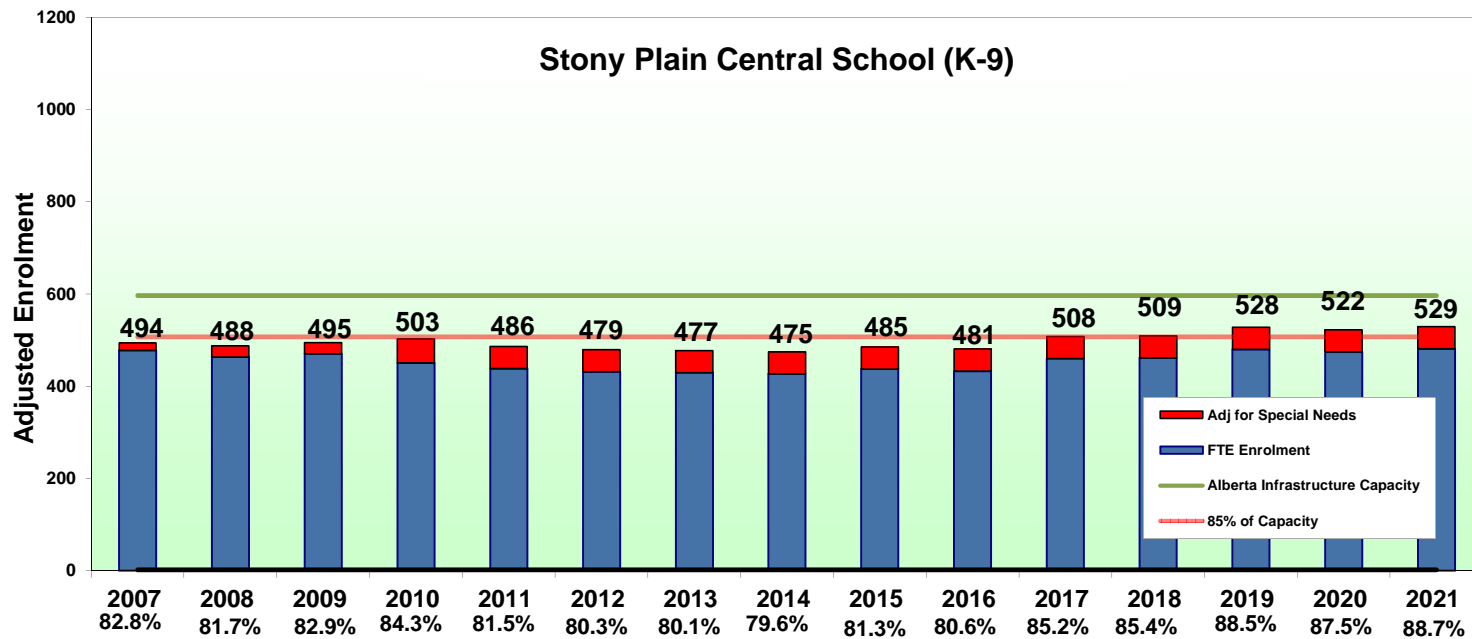
High Park															
5 YEAR HISTORICAL ENROLMENTS						10 YEAR PROJECTED ENROLMENTS									
GRADE	2007	2008	2009	2010	2011	2012	2013	2014	2015	2016	2017	2018	2019	2020	2021
K (actual)	33	27	36	49	34	34	34	34	34	34	34	34	34	34	34
K (fte)	16.5	13.5	18.0	24.5	17.0	17.0	17.0	17.0	17.0	17.0	17.0	17.0	17.0	17.0	17.0
1	38	36	35	35	51	35	35	35	35	35	35	35	35	35	35
2	29	37	40	42	34	52	35	35	35	35	35	35	35	35	35
3	40	33	43	40	42	35	53	36	36	36	36	36	36	36	36
4	35	43	38	43	40	43	35	54	37	37	37	37	37	37	37
5	30	36	49	50	46	41	44	36	55	38	38	38	38	38	38
6	39	36	42	51	45	47	42	45	37	56	38	38	38	38	38
7	45	38	41	45	54	46	48	42	45	38	57	39	39	39	39
8	50	43	45	36	45	55	47	49	43	46	38	59	40	40	40
9	29	57	50	49	38	46	56	48	50	44	47	39	60	41	41
10															
11															
12															
FTE Enrolment	352	373	401	416	412	416	412	397	390	382	379	372	374	355	355
# of Special Ed (Severe)	4	4	5	6	10	10	10	10	10	10	10	10	10	10	10
Regular FTE Enrolment	348	369	396	410	402	406	402	387	380	372	369	362	364	345	345
CLICK Special Program															
Student Allowance Factor	12	12	15	18	30	30	30	30	30	30	30	30	30	30	30
Adjusted Enrolment	360	381	411	428	432	436	432	417	410	402	399	392	394	375	375
"Utilization Rate"	75.2%	79.6%	86.0%	89.5%	82.6%	83.3%	82.5%	79.7%	78.5%	76.8%	76.3%	75.0%	75.4%	71.8%	71.8%
Net Capacity	478	478	478	478	523	523	523	523	523	523	523	523	523	523	523
85% Capacity	406	406	406	406	445	445	445	445	445	445	445	445	445	445	445
% Change	-1%	6%	8%	4%	-8%	1%	-1%	-3%	-2%	-2%	-1%	-2%	0%	-5%	0%
Spaces available	47	26	-5	-21	13	9	13	28	34	43	46	52	50	69	69



Notes:

- Enrolment projections October 18 2011
- Capacity includes December 2010 core portable movements
- % indicates Utilization Rate of Building

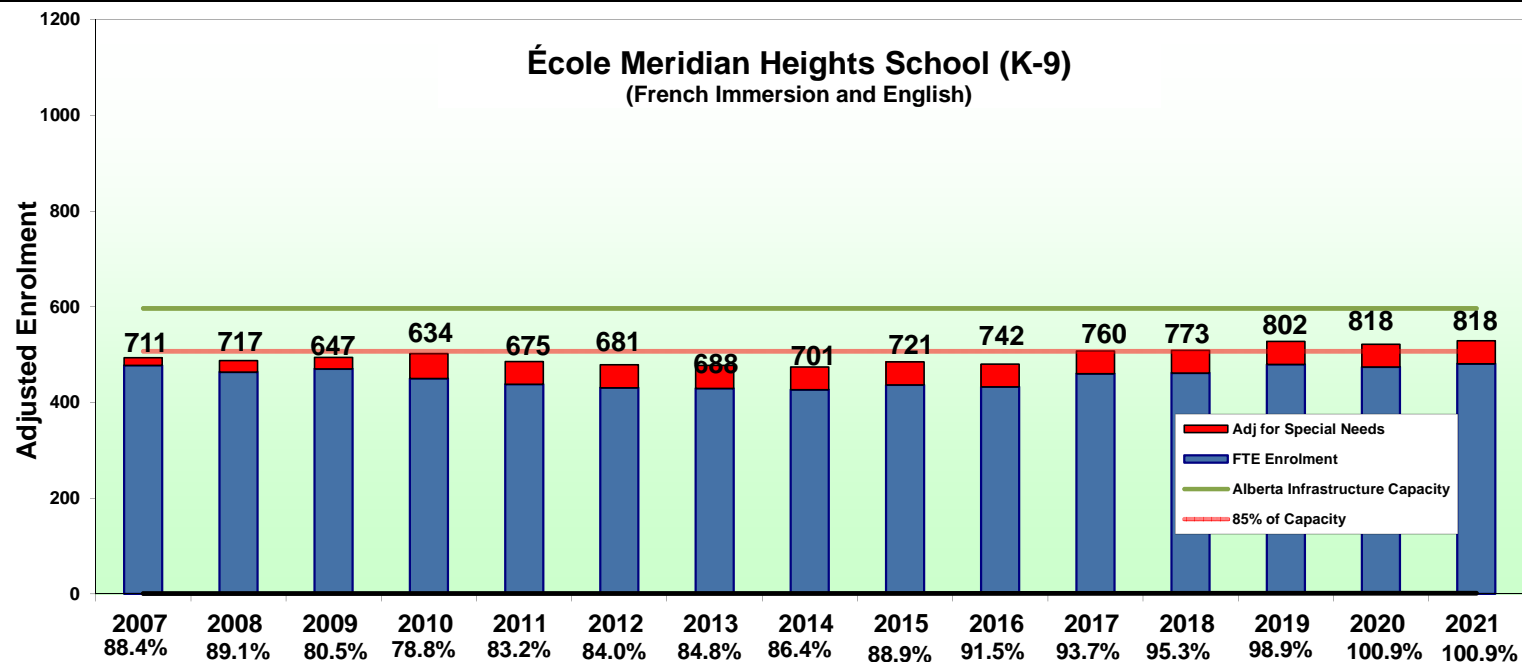
Stony Plain Central															
5 YEAR HISTORICAL ENROLMENTS						10 YEAR PROJECTED ENROLMENTS									
GRADE	2007	2008	2009	2010	2011	2012	2013	2014	2015	2016	2017	2018	2019	2020	2021
K (actual)	21	17	33	29	30	33	37	36	35	37	36	37	36	36	36
K (fte)	10.5	8.5	16.5	14.5	15.0	16.5	18.5	18.0	17.5	18.5	18.0	18.5	18.0	18.0	18.0
1	30	24	24	24	32	31	34	38	37	36	38	37	38	37	37
2	28	29	25	28	24	33	31	34	38	37	36	38	37	38	37
3	34	30	37	22	28	24	33	32	35	39	38	37	39	38	39
4	33	39	32	37	25	29	25	34	32	36	40	39	38	40	39
5	41	39	41	40	38	26	29	25	35	33	36	41	40	39	41
6	44	42	43	43	42	39	26	30	26	35	34	37	42	41	39
7	73	74	75	82	77	74	77	60	75	59	81	69	73	77	76
8	92	82	85	77	80	79	75	79	61	76	60	83	71	74	79
9	92	96	92	83	77	82	80	77	80	62	78	61	85	72	76
10															
11															
12															
FTE Enrolment	478	464	471	451	438	431	429	427	437	433	460	461	480	474	481
# of Special Ed (Severe)	8	12	12	26	24	24	24	24	24	24	24	24	24	24	24
Regular FTE Enrolment	470	452	459	425	414	407	405	403	413	409	436	437	456	450	457
CLICK Special Program															
Student Allowance Factor	24	36	36	78	72	72	72	72	72	72	72	72	72	72	72
Adjusted Enrolment	494	488	495	503	486	479	477	475	485	481	508	509	528	522	529
"Utilization Rate"	82.8%	81.7%	82.9%	84.3%	81.5%	80.3%	80.1%	79.6%	81.3%	80.6%	85.2%	85.4%	88.5%	87.5%	88.7%
Net Capacity	596	596	596	596	596	596	596	596	596	596	596	596	596	596	596
85% Capacity	507	507	507	507	507	507	507	507	507	507	507	507	507	507	507
% Change	-6%	-1%	1%	2%	-3%	-1%	0%	-1%	2%	-1%	6%	0%	4%	-1%	1%
Spaces available	13	19	12	4	21	28	29	32	22	26	-1	-2	-21	-15	-22



Notes:

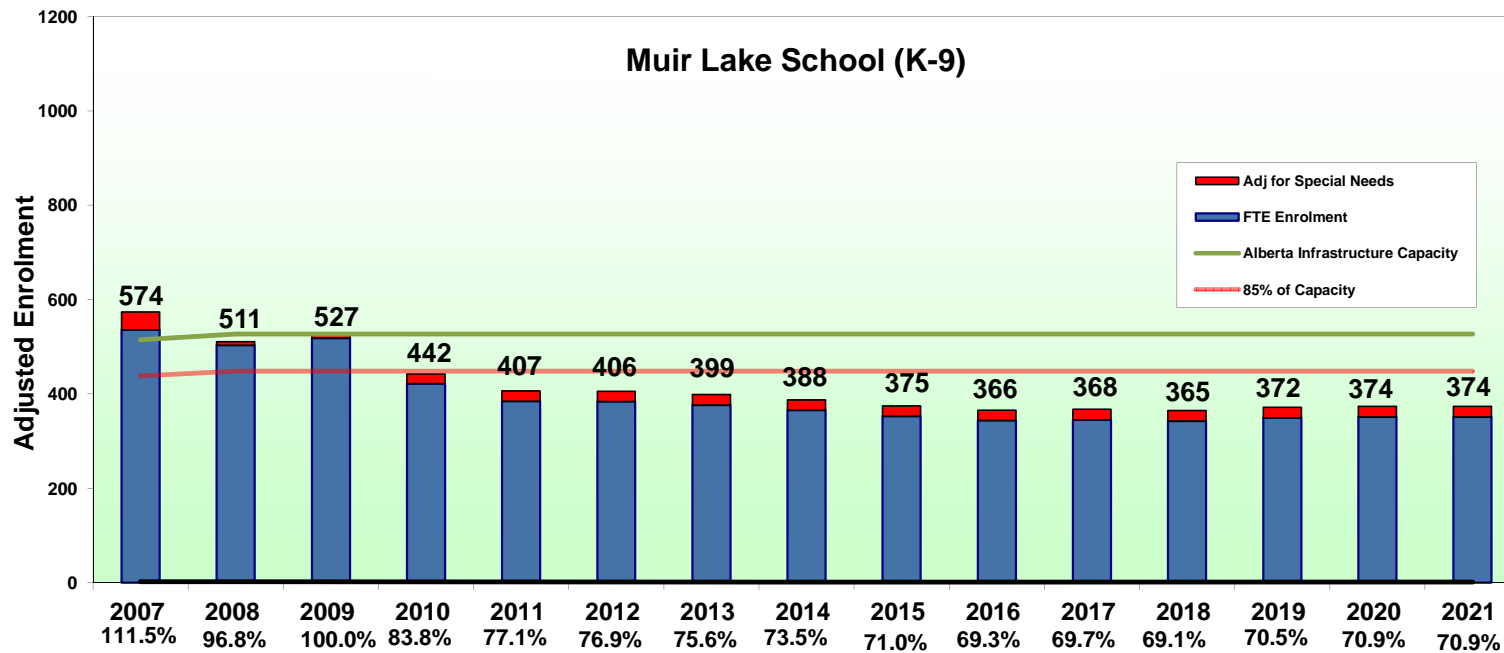
- Enrolment projections October 18 2011
- Capacity includes December 2010 core portable movements
- % indicates Utilization Rate of Building

École Meridian Heights															
5 YEAR HISTORICAL ENROLMENTS						10 YEAR PROJECTED ENROLMENTS									
GRADE	2007	2008	2009	2010	2011	2012	2013	2014	2015	2016	2017	2018	2019	2020	2021
K (actual)	77	63	54	70	79	79	79	79	79	79	79	79	79	79	79
K (fte)	38.5	31.5	27.0	35.0	39.5	39.5	39.5	39.5	39.5	39.5	39.5	39.5	39.5	39.5	39.5
1	71	79	63	47	63	79	79	79	79	79	79	79	79	79	79
2	66	67	67	58	50	63	79	79	79	79	79	79	79	79	79
3	68	68	63	57	66	50	63	79	79	79	79	79	79	79	79
4	73	72	69	60	61	66	50	63	79	79	79	79	79	79	79
5	74	76	70	63	58	61	66	50	63	79	79	79	79	79	79
6	72	78	69	63	59	58	61	66	50	63	79	79	79	79	79
7	79	72	77	74	66	59	58	61	66	50	63	79	79	79	79
8	82	78	64	75	72	66	59	58	61	66	50	63	79	79	79
9	67	79	66	64	73	72	66	59	58	61	66	50	63	79	79
10															
11															
12															
FTE Enrolment	691	701	635	596	608	614	621	634	654	675	693	706	735	751	751
# of Special Ed (Severe)	10	8	6	6	24	24	24	24	24	24	24	24	24	24	24
Regular FTE Enrolment	681	693	629	590	584	590	597	610	630	651	669	682	711	727	727
CLICK Special Program				17	13	13	13	13	13	13	13	13	13	13	13
Student Allowance Factor	30	24	18	44	92	92	92	92	92	92	92	92	92	92	92
Adjusted Enrolment	711	717	647	634	675	681	688	701	721	742	760	773	802	818	818
"Utilization Rate"	88.4%	89.1%	80.5%	78.8%	83.2%	84.0%	84.8%	86.4%	88.9%	91.5%	93.7%	95.3%	98.9%	100.9%	100.9%
Net Capacity	804	804	804	804	811	811	811	811	811	811	811	811	811	811	811
85% Capacity	683	683	683	683	689	689	689	689	689	689	689	689	689	689	689
% Change	-2%	1%	-10%	-2%	6%	1%	1%	2%	3%	3%	2%	2%	4%	2%	0%
Spaces available	-27	-33	36	50	14	8	1	-12	-32	-53	-71	-84	-113	-129	-129



Notes:
 - Enrolment projections October 18 2011
 - Capacity includes December 2010 core portable movements
 - % indicates Utilization Rate of Building

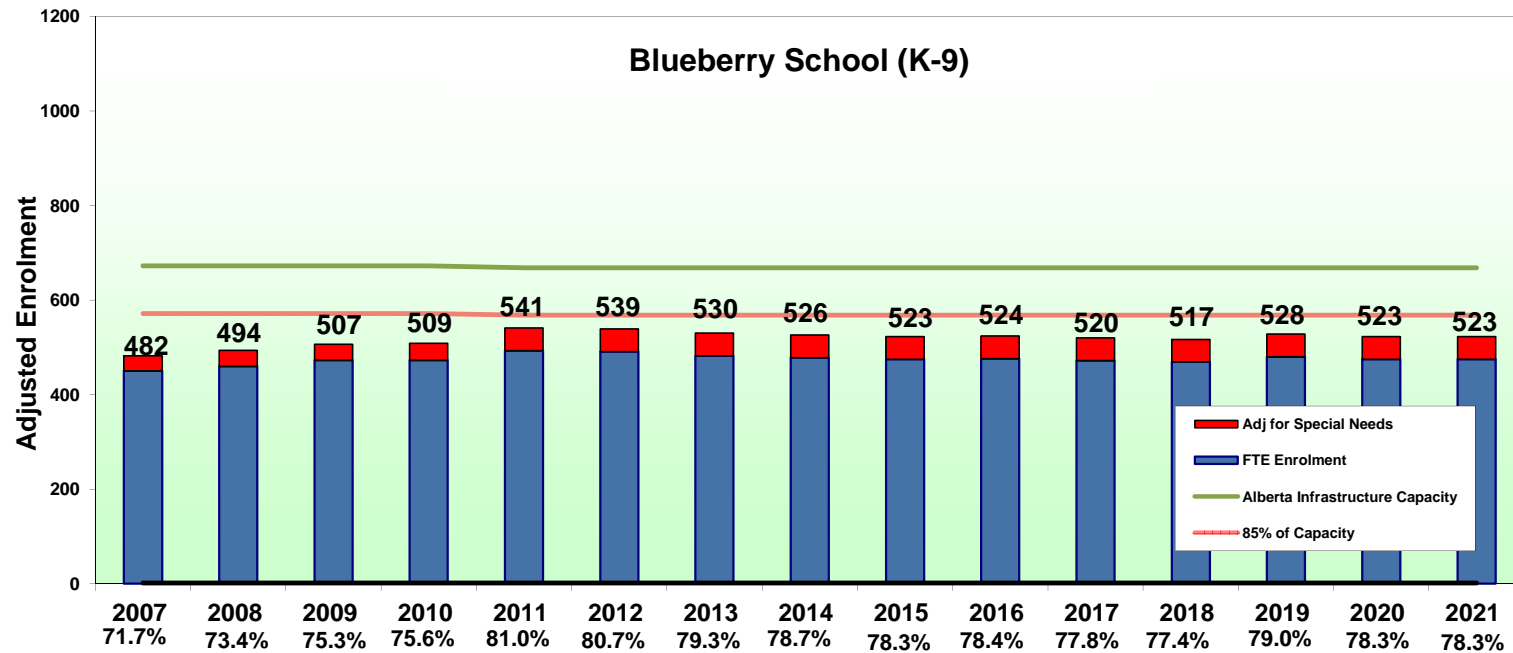
Muir Lake															
5 YEAR HISTORICAL ENROLMENTS						10 YEAR PROJECTED ENROLMENTS									
GRADE	2007	2008	2009	2010	2011	2012	2013	2014	2015	2016	2017	2018	2019	2020	2021
K (actual)	36	31	26	40	37	37	37	37	37	37	37	37	37	37	37
K (fte)	18.0	15.5	13.0	20.0	18.5	18.5	18.5	18.5	18.5	18.5	18.5	18.5	18.5	18.5	18.5
1	49	43	52	28	35	37	37	37	37	37	37	37	37	37	37
2	61	47	45	40	30	35	37	37	37	37	37	37	37	37	37
3	57	60	55	33	40	30	35	37	37	37	37	37	37	37	37
4	54	59	62	50	35	40	30	35	37	37	37	37	37	37	37
5	41	53	60	52	46	35	40	30	35	37	37	37	37	37	37
6	75	38	50	49	50	46	35	40	30	35	37	37	37	37	37
7	63	77	44	44	48	50	46	35	40	30	35	37	37	37	37
8	55	58	77	39	44	48	50	46	35	40	30	35	37	37	37
9	63	53	60	67	38	44	48	50	46	35	40	30	35	37	37
10															
11															
12															
FTE Enrolment	536	504	518	422	385	384	377	366	353	344	346	343	350	352	352
# of Special Ed (Severe)	19	7	9	10	11	11	11	11	11	11	11	11	11	11	11
Regular FTE Enrolment	517	490	500	412	374	373	366	355	342	333	335	332	339	341	341
CLICK Special Program															
Student Allowance Factor	57	21	27	30	33	33	33	33	33	33	33	33	33	33	33
Adjusted Enrolment	574	511	527	442	407	406	399	388	375	366	368	365	372	374	374
"Utilization Rate"	111.5%	96.8%	100.0%	83.8%	77.1%	76.9%	75.6%	73.5%	71.0%	69.3%	69.7%	69.1%	70.5%	70.9%	70.9%
Net Capacity	515	527	527	527	527	527	527	527	527	527	527	527	527	527	527
85% Capacity	438	448	448	448	448	448	448	448	448	448	448	448	448	448	448
% Change	0%	-13%	3%	-16%	-8%	0%	-2%	-3%	-3%	-2%	1%	-1%	2%	1%	0%
Spaces available	-136	-62	-79	6	42	43	50	61	74	83	81	84	77	75	75



Notes:

- Enrolment projections October 18 2011
- Capacity includes December 2010 core portable movements
- % indicates Utilization Rate of Building

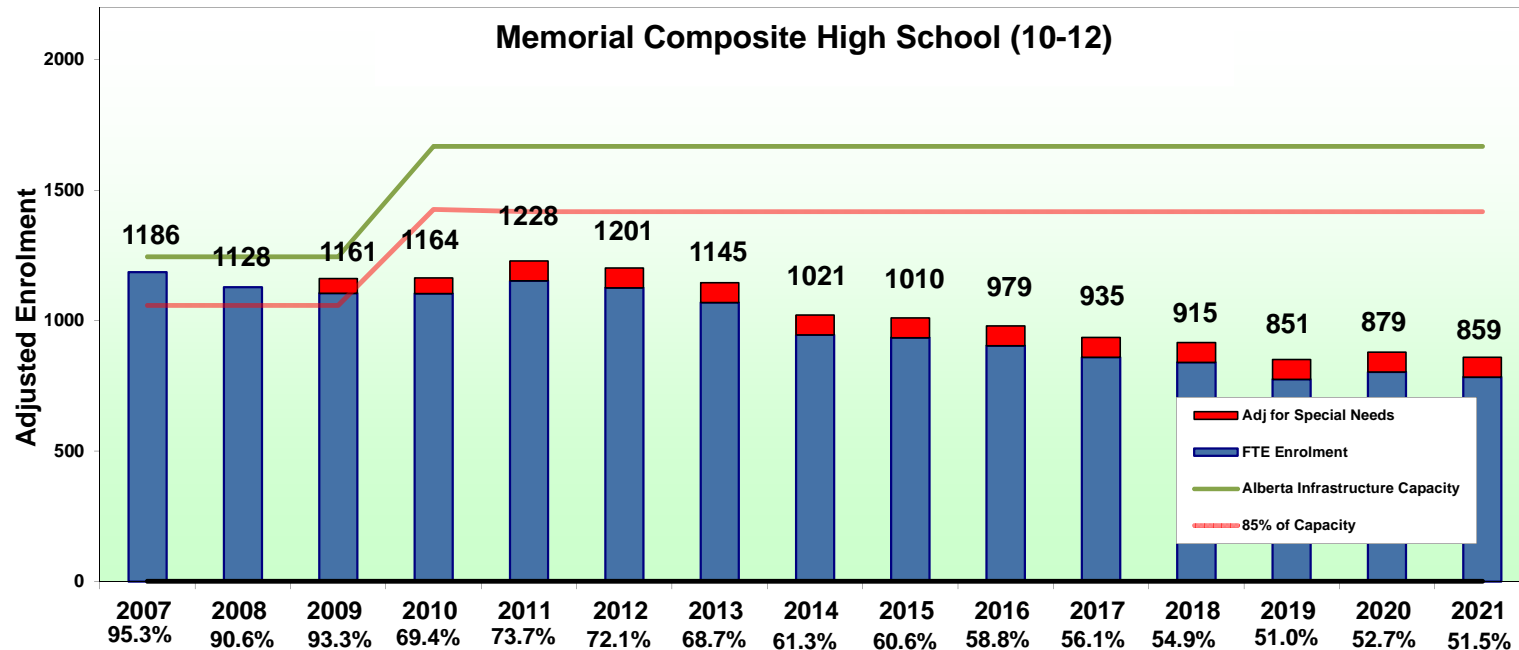
Blueberry															
5 YEAR HISTORICAL ENROLMENTS						10 YEAR PROJECTED ENROLMENTS									
GRADE	2007	2008	2009	2010	2011	2012	2013	2014	2015	2016	2017	2018	2019	2020	2021
K (actual)	46	53	43	55	50	50	50	50	50	50	50	50	50	50	50
K (fte)	23.0	26.5	21.5	27.5	25.0	25.0	25.0	25.0	25.0	25.0	25.0	25.0	25.0	25.0	25.0
1	44	43	51	41	55	50	50	50	50	50	50	50	50	50	50
2	45	46	49	51	39	55	50	50	50	50	50	50	50	50	50
3	46	43	45	49	53	39	55	50	50	50	50	50	50	50	50
4	37	45	45	47	54	53	39	55	50	50	50	50	50	50	50
5	55	45	47	47	49	54	53	39	55	50	50	50	50	50	50
6	53	57	51	46	53	49	54	53	39	55	50	50	50	50	50
7	52	58	60	53	54	53	49	54	53	39	55	50	50	50	50
8	45	51	53	60	59	54	53	49	54	53	39	55	50	50	50
9	50	45	50	51	52	59	54	53	49	54	53	39	55	50	50
10															
11															
12															
FTE Enrolment	450	460	473	473	493	491	482	478	475	476	472	469	480	475	475
# of Special Ed (Severe)	16	17	17	18	24	24	24	24	24	24	24	24	24	24	24
Regular FTE Enrolment	434	443	456	455	469	467	458	454	451	452	448	445	456	451	451
CLICK Special Program															
Student Allowance Factor	48	51	51	54	72	72	72	72	72	72	72	72	72	72	72
Adjusted Enrolment	482	494	507	509	541	539	530	526	523	524	520	517	528	523	523
"Utilization Rate"	71.7%	73.4%	75.3%	75.6%	81.0%	80.7%	79.3%	78.7%	78.3%	78.4%	77.8%	77.4%	79.0%	78.3%	78.3%
Net Capacity	673	673	673	673	668	668	668	668	668	668	668	668	668	668	668
85% Capacity	572	572	572	572	568	568	568	568	568	568	568	568	568	568	568
% Change	-5%	2%	3%	0%	7%	0%	-2%	-1%	-1%	0%	-1%	-1%	2%	-1%	0%
Spaces available	90	78	65	63	27	29	38	42	45	44	48	51	40	45	45



Notes:

- Enrolment projections October 18 2011
- Capacity includes December 2010 core portable movements
- % indicates Utilization Rate of Building

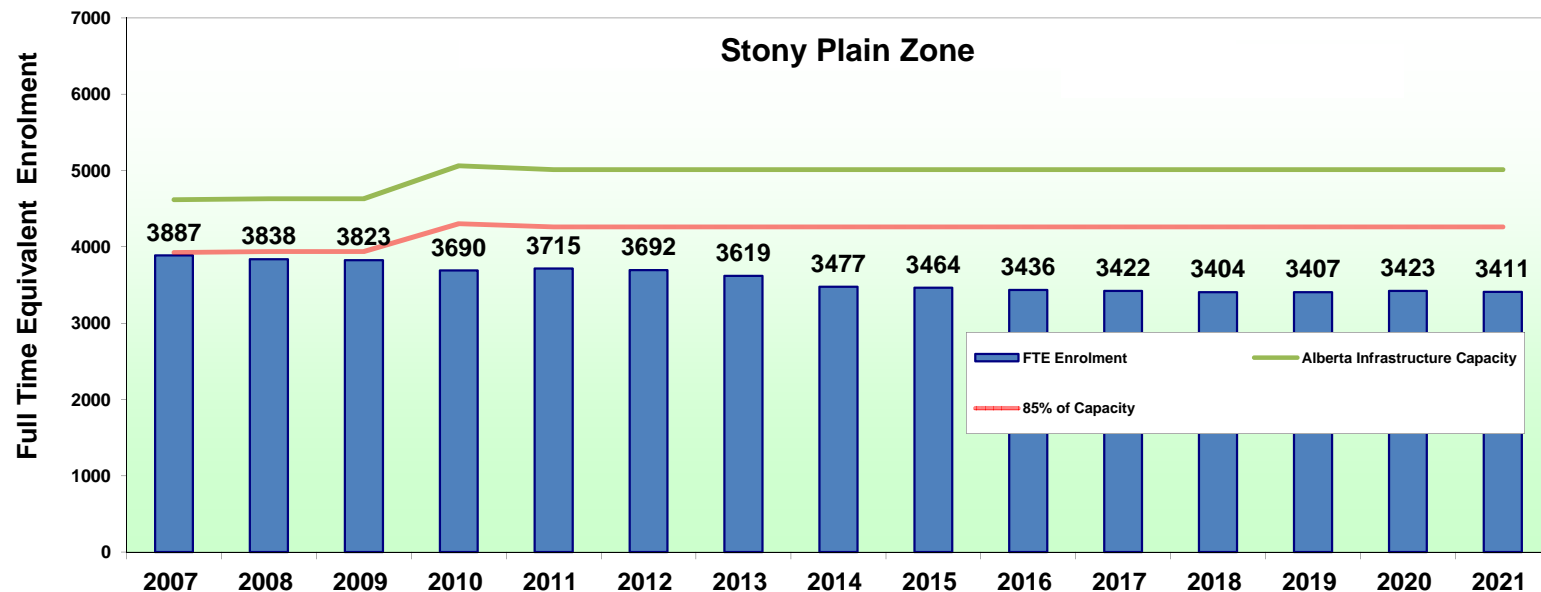
Memorial Composite High															
5 YEAR HISTORICAL ENROLMENTS						10 YEAR PROJECTED ENROLMENTS									
GRADE	2007	2008	2009	2010	2011	2012	2013	2014	2015	2016	2017	2018	2019	2020	2021
K (actual)															
K (fte)															
1															
2															
3															
4															
5															
6															
7															
8															
9															
10	413	358	372	390	415	309	312	300	297	283	256	278	220	282	263
11	378	394	340	350	372	415	309	312	300	297	283	256	278	220	282
12	395	376	393	364	365	402	448	333	337	324	321	306	276	300	238
FTE Enrolment	1186	1128	1105	1104	1152	1125	1069	945	934	903	859	839	775	803	783
# of Special Ed (Severe)	37	34	28	30	38	38	38	38	38	38	38	38	38	38	38
Regular FTE Enrolment	1149	1094	1077	1074	1114	1087	1031	907	896	865	821	801	737	765	745
CLICK Special Program															
Student Allowance Factor	111	102	84	90	114	114	114	114	114	114	114	114	114	114	114
Adjusted Enrolment	1186	1128	1161	1164	1228	1201	1145	1021	1010	979	935	915	851	879	859
"Utilization Rate"	95.3%	90.6%	93.3%	69.4%	73.7%	72.1%	68.7%	61.3%	60.6%	58.8%	56.1%	54.9%	51.0%	52.7%	51.5%
Net Capacity	1245	1245	1245	1667	1667	1667	1667	1667	1667	1667	1667	1667	1667	1667	1667
85% Capacity	1058	1058	1058	1425	1417	1417	1417	1417	1417	1417	1417	1417	1417	1417	1417
% Change	-5%	-5%	3%	-26%	6%	-2%	-5%	-11%	-1%	-3%	-4%	-2%	-7%	3%	-2%
Spaces available	164	182	169	149	115	107	272	396	407	438	481	502	566	538	558



Notes:

- Enrolment projections October 18 2011
- Capacity includes December 2010 core portable movements
- % indicates Utilization Rate of Building

Stony Plain Zone															
	5 YEAR HISTORICAL ENROLMENTS					10 YEAR PROJECTED ENROLMENTS									
GRADE	2007	2008	2009	2010	2011	2012	2013	2014	2015	2016	2017	2018	2019	2020	2021
K (actual)	235	229	224	260	260	263	267	266	265	267	266	267	266	266	266
K (fte)	117.5	114.5	112.0	130.0	130.0	131.5	133.5	133.0	132.5	133.5	133.0	133.5	133.0	133.0	133.0
1	258	256	266	186	277	263	266	270	269	268	270	269	270	269	269
2	258	258	258	229	207	279	265	268	272	271	270	272	271	272	271
3	279	266	277	214	271	209	282	267	270	274	273	272	274	273	274
4	265	291	278	236	247	273	211	285	269	272	276	275	274	276	275
5	275	284	295	243	274	249	276	212	287	271	274	278	277	276	278
6	311	279	293	240	280	276	251	278	214	290	273	276	281	280	278
7	312	319	297	216	299	282	278	252	279	216	292	274	278	282	281
8	324	312	324	210	300	302	284	281	254	282	217	295	276	280	285
9	301	330	318	231	278	303	304	287	283	256	284	219	297	279	282
10	413	358	372	390	415	309	312	300	297	283	256	278	220	282	263
11	378	394	340	350	372	415	309	312	300	297	283	256	278	220	282
12	395	376	393	364	365	402	448	333	337	324	321	306	276	300	238
FTE Enrolment	3887	3838	3823	3690	3715	3692	3619	3477	3464	3436	3422	3404	3407	3423	3411
# of Special Ed (Severe)	111	101	96	116	151	151	151	151	151	151	151	151	151	151	151
Regular FTE Enrolment	3776	3737	3727	3574	3564	3541	3468	3326	3313	3285	3271	3253	3256	3272	3260
CLICK Special Program	0	0	0	17	13	13	13	13	13	13	13	13	13	13	13
ALT Special Program	0	0	0	0	72	72	72	72	72	72	72	72	72	72	72
Student Allowance Factor	333	303	288	374	689	689	689	689	689	689	689	689	689	689	689
Adjusted Enrolment	4109	4040	4015	3973	4253	4230	4156	4014	4002	3974	3959	3941	3944	3960	3948
"Utilization Rate"	89.0%	87.2%	86.7%	78.5%	84.9%	84.4%	82.9%	80.1%	79.8%	79.3%	79.0%	78.7%	78.7%	79.0%	78.8%
Net Capacity	4618	4631	4631	5063	5011	5011	5011	5011	5011	5011	5011	5011	5011	5011	5011
85% Capacity	3926	3936	3936	4304	4260	4260	4260	4260	4260	4260	4260	4260	4260	4260	4260
% Change	-2%	-2%	-1%	-10%	8%	-1%	-2%	-3%	0%	-1%	0%	0%	0%	0%	0%
Spaces available	-183	-104	-79	331	7	30	103	245	258	286	300	318	316	299	312



Notes:

- Enrolment projections October 18 2011
- Capacity includes December 2010 core portable movements
- % indicates Utilization Rate of Building

APPENDIX C

SPRUCE GROVE LONG RANGE FACILITIES PLAN-PROJECTED ENROLMENTS AND SCHOOLS

April 2012



Collaborate • Create • Learn



Collaborate – Create - Learn

Spruce Grove Long Range Enrolment and Number of Schools Analysis

Parkland School Division No. 70



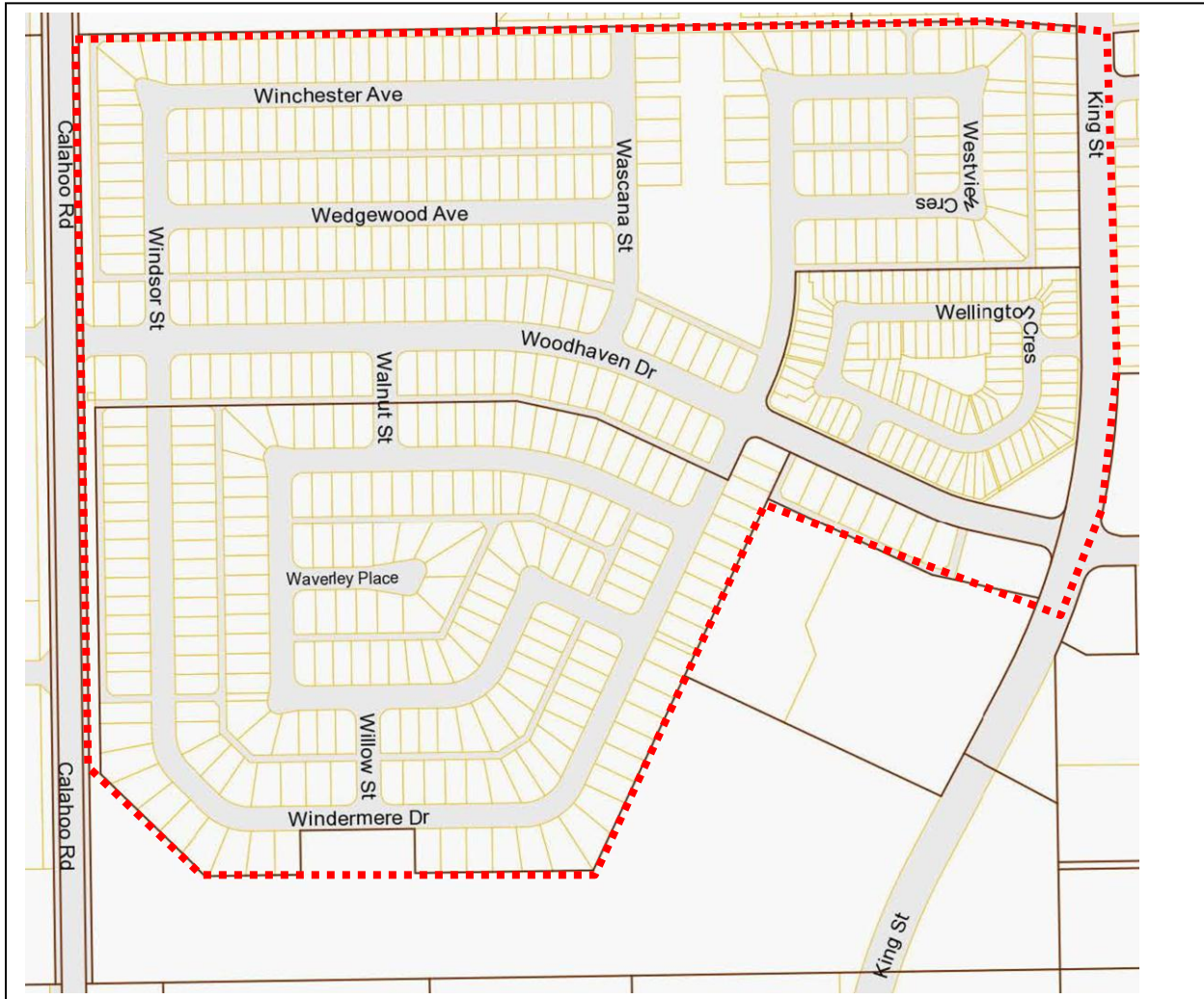
Parkland School Division System Review
September 30, 2011 Enrolment Distribution, By Grade type, by Geographic Area



**CITY OF SPRUCE GROVE ESTIMATE OF TOTAL DEVELOPABLE RESIDENTIAL LANDS,
BY AREA STRUCTURE PLAN AREA, AND ESTIMATE OF DWELLING UNITS
YET TO BE DEVELOPED - JANUARY 18 2012**

ASP Area	Residential Density Type	Total No. of Developable Hectares	Units / Ha.	Estimated Total No. of Developable Dwelling Units	Percentage Developed to date	Estimated No. of Dwelling Units Yet to be developed
Lakewood ASP						
	Low	0.00	20	0	100.0%	0
	Medium	1.36	30	41	100.0%	0
	High	2.11	87	184	100.0%	0
North Central ASP						
	Low	151.23	20	3025	69.0%	938
	Medium	44.11	30	1323	39.7%	798
	High	5.01	87	436	0.0%	436
Heritage Estates ASP						
	Low	28.06	20	561	45.8%	304
	Medium	13.56	42	570	102.4%	0
	High	2.41	87	210	63.5%	77
West ASP						
	Low	128.49	20	2570	28.6%	1835
	Medium	43.88	42	1843	41.5%	1078
	High	10.95	87	953	53.9%	439
West Central ASP						
	Low	31.5	20	630	24.8%	474
	Medium	3.8	42	160	0.0%	160
	High	2.9	87	252	0.0%	252
Spruce Village ASP						
	Low	28	20	560	74.3%	144
	Medium	1.63	42	68	408.6%	0
	High	0.93	87	81	96.8%	3
Shiloh ASP						
	Low	38.71	20	774	0.0%	774
	Medium	16.59	42	697	0.0%	697
	High	5.5	87	479	0.0%	479
Pioneer Lands ASP						
	Low	148.36	20	2967	6.2%	2783
	Medium	4.35	42	183	0.0%	183
	High	4.35	87	378	0.0%	378
Total Existing ASP's						
	Low	554.35		11087		7252
	Medium	129.28		4884		2915
	High	34.16		2972		2063

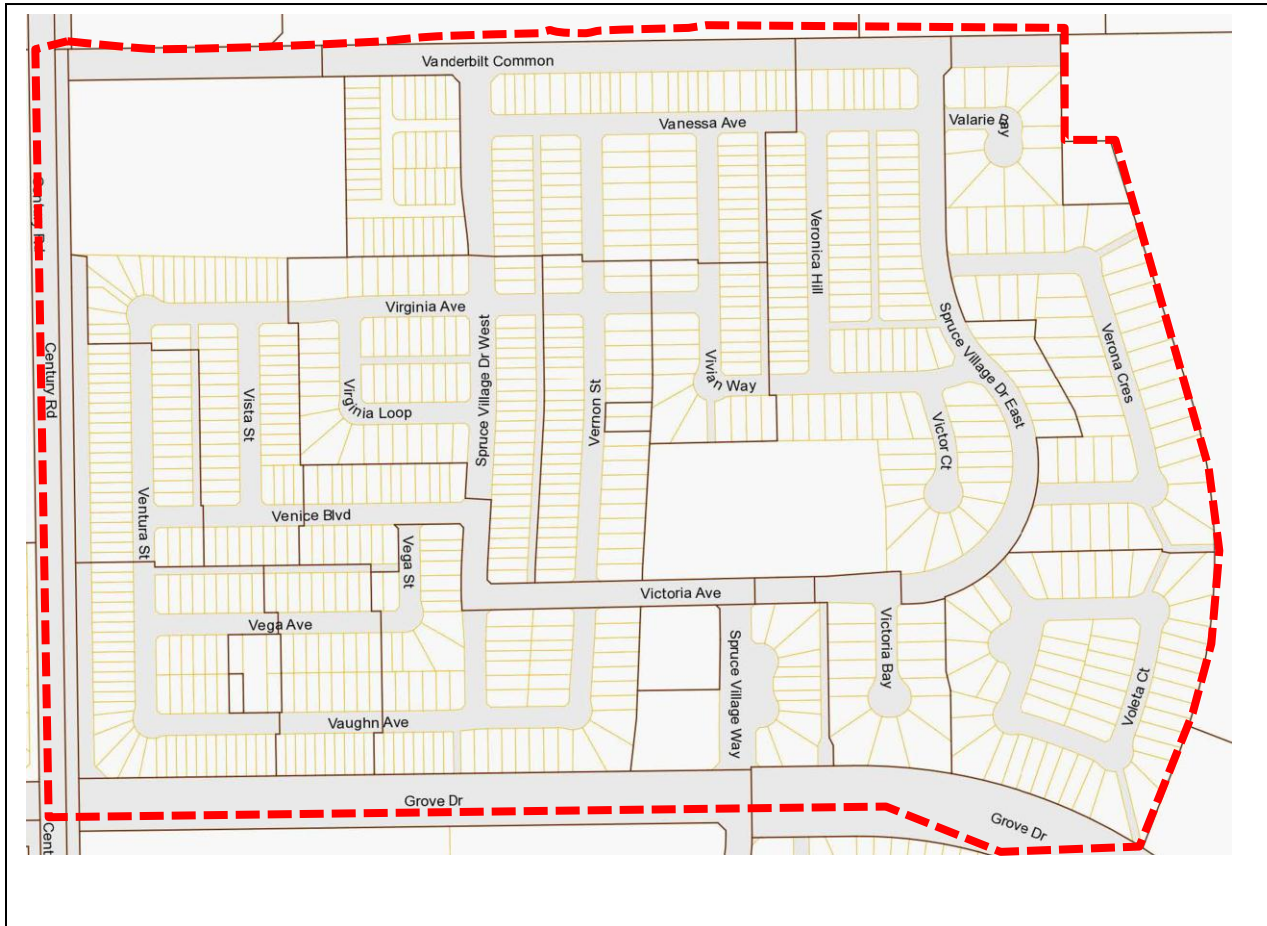
**PARKLAND SCHOOL DIVISION
STUDENT GENERATION RATE ANALYSIS
SPRUCE GROVE WOODHAVEN NEIGHBOURHOOD STUDY AREA
JANUARY 18, 2012**



**Parkland School Division
Student Generation Rate Analysis
Spruce Grove Woodhaven Neighbourhood Study Area
January 18, 2012**

		No. of Dwelling Units	Headcount Enrolment			Total
			Elem (K-4)	Middle (5-9)	High (10-12)	
Total	No.	533	74	70	44	188
Students / Dwelling Unit			0.14	0.13	0.08	0.35

**PARKLAND SCHOOL DIVISION
STUDENT GENERATION RATE ANALYSIS
SPRUCE GROVE SPRUCE VILLAGE NEIGHBOURHOOD STUDY AREA
JANUARY 18, 2012**



**Parkland School Division
Student Generation Rate Analysis
Spruce Grove Spruce Village Neighbourhood Study Area
January 18, 2012**

		No. of Dwelling Units	Headcount Enrolment			
			Elem (K-4)	Middle (5-9)	High (10-12)	Total
Total	No.	725	108	71	43	222
Students / Dwelling Unit			0.15	0.10	0.06	0.31

**PARKLAND SCHOOL DIVISION
STUDENT GENERATION RATE ANALYSIS
SPRUCE GROVE HARVEST RIDGE NEIGHBOURHOOD STUDY AREA
JANUARY 18, 2012**



**Parkland School Division
Student Generation Rate Analysis
Spruce Grove Harvest Ridge Neighbourhood Study Area
January 18, 2012**

		No. of Dwelling Units	Headcount Enrolment			Total
			Elem (K-4)	Middle (5-9)	High (10-12)	
Total	No.	164	22	13	8	43
Students / Dwelling Unit			0.13	0.08	0.05	0.26

[illegible]44

PARKLAND SCHOOL DIVISION - SPRUCE GROVE SCHOOLS
STUDENT GENERATION ANALYSIS AND ENROLMENT PROJECTIONS - FEBRUARY 6, 2012

Neighbourhood / Housing Type (A)	Projected Number of Housing Units Yet to be built (A)	Projected No. of Elem. Students (K to 4) - Low Scenario (B)	Projected No. of Middle Students (5 to 9) - Low Scenario (B)	Projected No. of Senior High Students (10 to 12) - Low Scenario (B)	Projected Total No. of Students (K to 12) - Low Scenario (B)	Projected No. of Elem. Students (K to 4) - Medium Scenario (C)	Projected No. of Middle Students (5 to 9) - Medium Scenario (C)	Projected No. of Senior High Students (10 to 12) - Medium Scenario (C)	Projected Total No. of Students (K to 12) - Medium Scenario (C)	Projected No. of Elem. Students (K to 4) - High Scenario (D)	Projected No. of Middle Students (5 to 9) - High Scenario (D)	Projected No. of Senior High Students (10 to 12) - High Scenario (D)	Projected Total No. of Students (K to 12) - High Scenario (D)
Spruce Grove - North Central ASP	2,172	209	123	76	408	247	180	113	541	305	210	135	650
Single Family Residential	938	126	74	46	246	149	109	68	326	184	126	82	392
Townhouse / Apartments	1,234	83	49	30	162	98	72	45	214	121	83	54	258
Spruce Grove - Heritage Estates ASP	381	46	27	17	90	54	40	25	119	67	46	30	143
Single Family Residential	304	41	24	15	80	48	35	22	106	60	41	26	127
Townhouse / Apartments	77	5	3	2	10	6	4	3	13	8	5	3	16
Spruce Grove - West ASP	3,352	348	206	127	680	412	301	189	902	509	350	226	1084
Single Family Residential	1,835	246	145	90	481	292	213	133	638	360	247	160	767
Townhouse / Apartments	1,517	102	60	37	199	120	88	55	264	149	102	66	317
Spruce Grove - West Central ASP	886	91	54	33	178	108	79	49	236	133	92	59	284
Single Family Residential	474	64	38	23	124	75	55	34	165	93	64	41	198
Townhouse / Apartments	412	28	16	10	54	33	24	15	72	40	28	18	86
Spruce Grove - Spruce Village ASP	147	20	12	7	38	23	17	11	51	29	20	13	61
Single Family Residential	144	19	11	7	38	23	17	10	50	28	19	13	60
Townhouse / Apartments	3	0	0	0	0	0	0	0	1	0	0	0	1
Spruce Grove - Shiloh ASP	1,950	183	108	66	357	216	158	99	473	267	184	119	569
Single Family Residential	774	104	61	38	203	123	90	56	269	152	104	67	324
Townhouse / Apartments	1,176	79	47	29	154	93	68	43	204	115	79	51	246
Spruce Village - Pioneer Lands ASP	3,344	411	243	149	803	487	355	223	1065	601	413	267	1281
Single Family Residential	2,783	373	221	136	730	442	323	202	967	546	375	242	1164
Townhouse / Apartments	561	38	22	14	74	45	33	20	98	55	38	24	117
Spruce Grove - Urban Total	12,232	1307	772	475	2554	1548	1130	708	3386	1912	1313	848	4073
Single Family Residential	7,252	973	575	354	1,901	1,152	841	527	2,521	1,423	978	631	3,032
Townhouse / Apartment	4,980	334	197	121	653	396	289	181	866	489	336	217	1,041

September 30, 2011 Enrolment

Spruce Grove - Urban East Area	341	239	148	728	341	239	148	728	341	239	148	728
Spruce Grove - Urban North Area	261	212	141	614	261	212	141	614	261	212	141	614
Spruce Grove - Urban West Area	197	135	71	403	197	135	71	403	197	135	71	403
Spruce Grove - Urban Central Area	524	467	330	1321	524	467	330	1321	524	467	330	1321
Spruce Grove - Urban Southwest Area	0	0	0	0	0	0	0	0	0	0	0	0
Spruce Grove - Urban Total	1323	1053	690	3066	1323	1053	690	3066	1323	1053	690	3066

Existing + Projected Total

Spruce Grove - Urban East Area	771	493	305	1569	851	611	381	1843	971	672	427	2070
Spruce Grove - Urban North Area	470	335	217	1022	717	516	330	1562	566	422	276	1264
Spruce Grove - Urban West Area	636	394	231	1261	1156	774	469	2399	839	576	356	1772
Spruce Grove - Urban Central Area	570	494	347	1411	578	507	355	1440	591	513	360	1464
Spruce Grove - Urban Southwest Area	183	108	66	357	216	158	99	473	267	184	119	569
Spruce Grove - Urban Total	2630	1825	1165	5620	3518	2566	1634	7718	3235	2366	1538	7139

Existing Percentage of Students in French Immersion

Spruce Grove - Urban East Area	14%	7%	3%	9%	14%	7%	3%	9%	14%	7%	3%	9%
Spruce Grove - Urban North Area	14%	7%	3%	9%	14%	7%	3%	9%	14%	7%	3%	9%
Spruce Grove - Urban West Area	14%	7%	3%	9%	14%	7%	3%	9%	14%	7%	3%	9%
Spruce Grove - Urban Central Area	14%	7%	3%	9%	14%	7%	3%	9%	14%	7%	3%	9%
Spruce Grove - Urban Southwest Area	14%	7%	3%	9%	14%	7%	3%	9%	14%	7%	3%	9%
Spruce Grove - Urban Total	14%	7%	3%	9%	14%	7%	3%	9%	14%	7%	3%	9%

Projected French Immersion Total

Spruce Grove - Urban East Area	108	35	9	152	119	43	11	173	136	47	13	196
Spruce Grove - Urban North Area	66	23	7	96	100	36	10	146	79	30	8	117
Spruce Grove - Urban West Area	89	28	7	124	162	54	14	230	118	40	11	169
Spruce Grove - Urban Central Area	80	35	10	125	81	35	11	127	83	36	11	129
Spruce Grove - Urban Southwest Area	26	8	2	35	30	11	3	44	37	13	4	54
Spruce Grove - Urban Total	368	128	35	531	493	180	49	721	453	166	46	665

Projected Non-French Immersion Total

Spruce Grove - Urban East Area	679	459	295	1433	732	569	370	1670	854	625	414	1893
Spruce Grove - Urban North Area	413	312	210	935	616	480	320	1416	498	392	268	1158
Spruce Grove - Urban West Area	560	367	224	1150	994	720	455	2169	739	536	345	1620
Spruce Grove - Urban Central Area	502	460	336	1297	497	471	344	1313	520	477	349	1347
Spruce Grove - Urban Southwest Area	161	100	64	326	186	147	96	429	235	171	115	521
Spruce Grove - Urban Total	2314	1697	1130	5142	3026	2387	1585	6997	2847	2201	1492	6539

Projected No. of Required Non-French Immersion Schools - 600 Capacity K to 9 Schools

Spruce Grove - Urban East Area	0	2	0	2	0	2	0	2	0	2	0	2
Spruce Grove - Urban North Area	0	1	0	1	0	2	0	2	0	1	0	1
Spruce Grove - Urban West Area	0	2	0	2	0	3	0	3	0	2	0	2
Spruce Grove - Urban Central Area	0	2	0	2	0	2	0	2	0	2	0	2
Spruce Grove - Urban Southwest Area	0	0	0	0	0	1	0	1	0	1	0	1
Spruce Grove - Urban Total	0	7	0	7	0	9	0	9	0	8	0	8

Projected No. of Required Non-French Immersion Schools - 700 Capacity K to 9 Schools

Spruce Grove - Urban East Area	0	2	0	2	0	2	0	2	0	2	0	2
Spruce Grove - Urban North Area	0	1	0	1	0	2	0	2	0	1	0	1
Spruce Grove - Urban West Area	0	1	0	1	0	2	0	2	0	2	0	2
Spruce Grove - Urban Central Area	0	1	0	1	0	1	0	1	0	1	0	1
Spruce Grove - Urban Southwest Area	0	0	0	0	0	0	0	0	0	1	0	1
Spruce Grove - Urban Total	0	6	0	6	0	8	0	8	0	7	0	7

Projected No. of Required Non-French Immersion Schools - 800 Capacity K to 9 Schools

Spruce Grove - Urban East Area	0	1	0	1	0	2	0	2	0	2	0	2
Spruce Grove - Urban North Area	0	1	0	1	0	1	0	1	0	1	0	1
Spruce Grove - Urban West Area	0	1	0	1	0	2	0	2	0	2	0	2
Spruce Grove - Urban Central Area	0	1	0	1	0	1	0	1	0	1	0	1
Spruce Grove - Urban Southwest Area	0	0	0	0	0	0	0	0	0	1	0	1

Spruce Grove - Urban Total	0	5	0	5	0	7	0	7	0	6	0	6
-----------------------------------	----------	----------	----------	----------	----------	----------	----------	----------	----------	----------	----------	----------

Notes:

(A) Source: City of Spruce Grove - January 2012

(B) Low Scenario = Low Student Generation Rate (single family, townhouse, apartment)

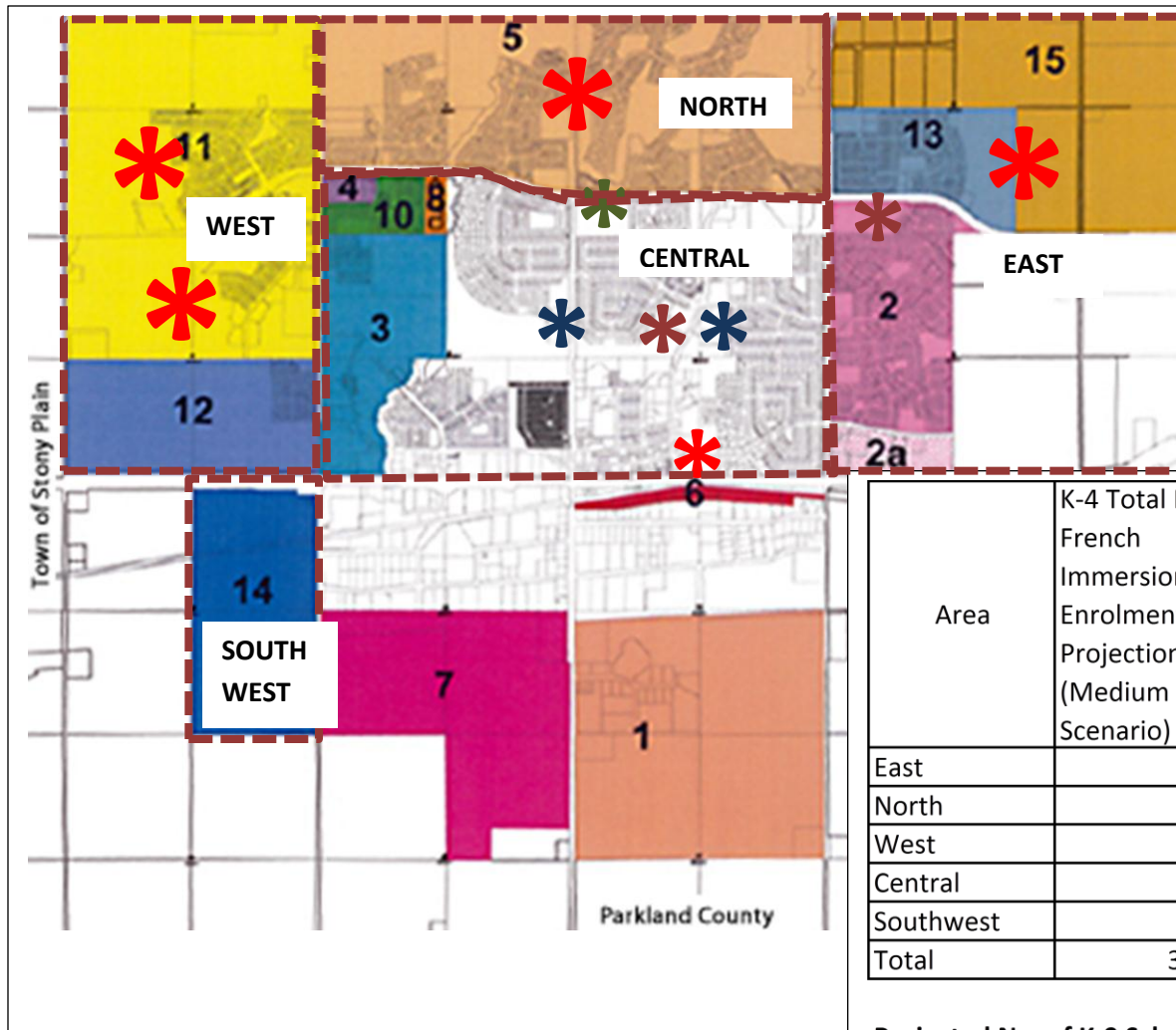
(C) Medium Scenario = Average Student Generation Rate (single family, townhouse, apartment)

(D) High Scenario = High Student Generation Rate (single family, townhouse, apartment)

STUDENT GENERATION ANALYSIS - JANUARY 2012

Test Area	Housing Type	No. of Units	Total Enrolment				Student Generation Rate			
			Elementary (K to 4)	Middle (7 to 9)	Senior High (10 to 12)	Total Enrolment (K to 12)	Elementary (K to 4)	Middle (7 to 9)	Senior High (10 to 12)	Total Enrolment (K to 12)
Grove Meadows Nbhd	Single Family	586	115	79	51	245	0.20	0.13	0.09	0.42
Harvest Ridge Nbhd	Single Family	164	22	13	8	43	0.13	0.08	0.05	0.26
Spruce Village Nbhd	Single Family	725	108	71	43	222	0.15	0.10	0.06	0.31
Woodhaven Nbhd	Single Family	533	74	70	44	188	0.14	0.13	0.08	0.35
Summary	Low	164	22	13	8	43	0.13	0.08	0.05	0.26
	Medium	502	80	58	37	175	0.16	0.12	0.07	0.35
	High	586	115	79	51	245	0.20	0.13	0.09	0.42

**Parkland School Division Capital Plan Spruce Grove Projected
Enrolments and Number of Schools – February 6, 2012**



- Existing K-4 School
- Existing 5-9 School
- Existing K-9 School
- Existing 10-12 High School
- Proposed K-9 School Sites

Area	K-4 Total Non-French Immersion Enrolment Projection (Medium Scenario)	5-9 Total Non-French Immersion Enrolment Projection (Medium Scenario)	K-9 Total Non-French Immersion Enrolment Projection (Medium Scenario)	10-12 Total Non-French Immersion Enrolment Projection (Medium Scenario)	K-12 Total Non-French Immersion Enrolment Projection (Medium Scenario)
East	732	569	1301	370	1671
North	616	480	1096	320	1416
West	994	720	1714	455	2169
Central	497	471	968	344	1312
Southwest	186	147	333	98	431
Total	3025	2387	5412	1587	6999

Projected No. of K-9 Schools

600 Capacity			9
700 Capacity			8
800 Capacity			7

Projected French Immersion Enrolment

Total	493	180	673	49	722
-------	-----	-----	-----	----	-----

APPENDIX D

NEW SPRUCE GROVE K-9 SCHOOL DEVELOPER COMMITMENT LETTER AND SITE MAP

April 2012



Collaborate • Create • Learn

VIA EMAIL: slabrie@psd10.ab.ca

Dear Mr. LaBrie:

Thank you for the opportunity to meet with us to discuss Parkland School Division's needs for a K-9 school site. Further to our discussion, we would hereby like to make a commitment to the Parkland School Division to provide a fully-serviced school site to you by fall, 2013.

For your reference, we have enclosed a map indicating the proposed location of this school site within Appendix A.

We will work in partnership with the Parkland School Division and the City of Spruce Grove to accommodate the design needs for this school site and related sportsfields within our lands in the Pioneer Area of Spruce Grove without delay.

Our advantage in this regard is:

- Beaverbrook Pioneer Ltd. are the owners of the quarter section of land that the proposed site is located within, as well as adjacent quarter sections in the Pioneer Area of Spruce Grove. This allows us to provide flexibility in the configuration, design and development of the school site to meet the needs of the Parkland School Division.
- Beaverbrook Pioneer Ltd. is actively developing lands in this area for residential uses, and will be advancing additional stages of development during the 2012 and 2013 construction seasons. We have the ability to easily incorporate the development and servicing of this school site within our already-planned construction program.

We look forward to working with you on this endeavor. We would welcome additional meetings with the Parkland School Division to discuss this opportunity further. If you have any questions, please do not hesitate to contact me.

Sincerely,

BEAVERBROOK PIONEER LTD.

Jodie Wacko, RPP, MCIP

Vice President

Office 780.484.4389 | Direct 780.408.8117

Email jwacko@beaverbrook.ca

beaverbrook.ca

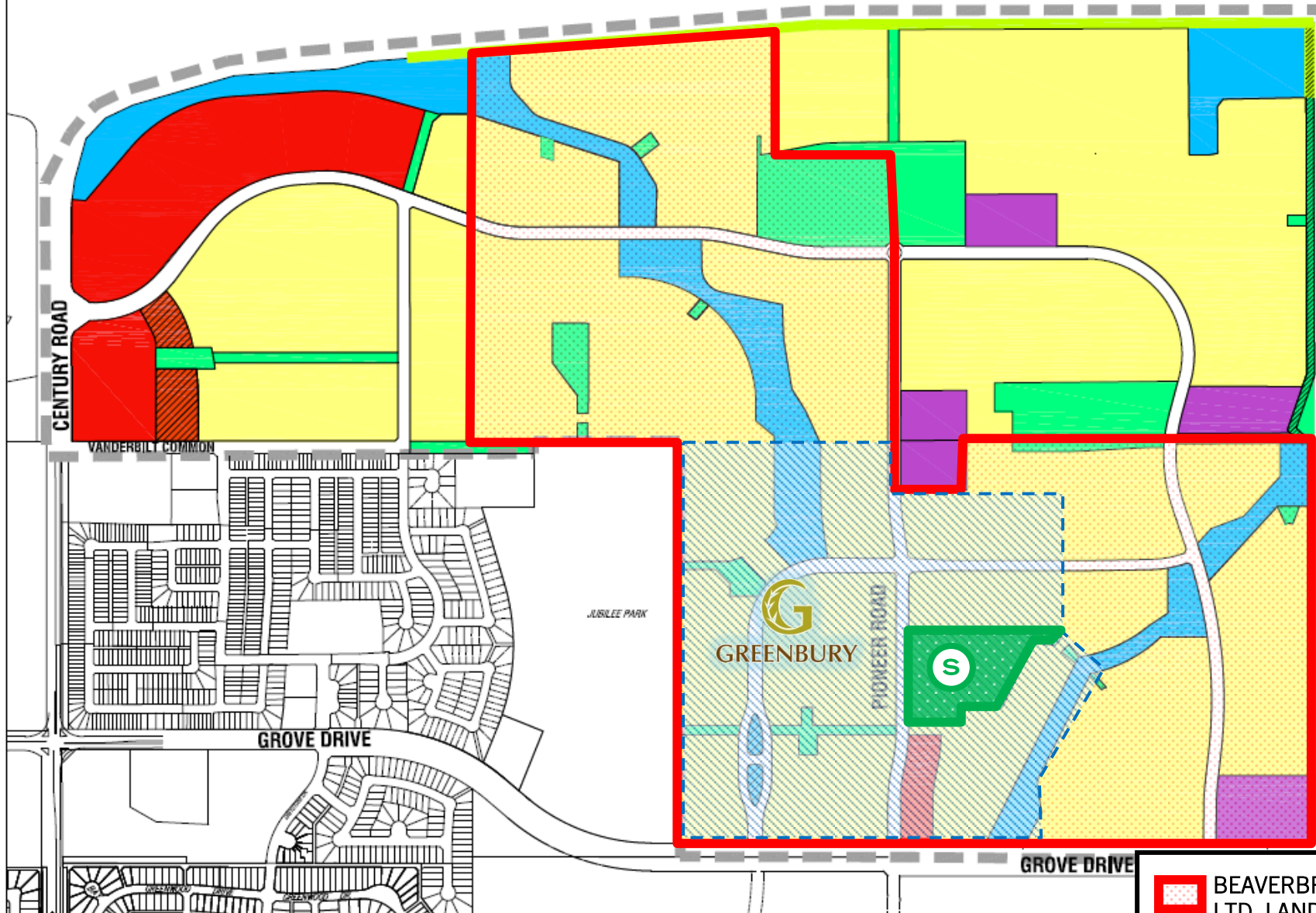
cc Mayor Stuart Houston, City of Spruce Grove
David Hales, GM Planning and Engineering, City of Spruce Grove
George Cantalini, President, Beaverbrook Developments
Salima Kheraj, Senior Project Manager, Beaverbrook Developments

Enclosures: Appendix A – Map of Beaverbrook Pioneer Land Holdings and Proposed School Site
Appendix B – Supporting Information in response to “Site Readiness Checklist”

APPENDIX A

YELLOWHEAD TRANS CANADA (HWY 16)

SPRUCE GROVE CITY LIMITS



NTS
OCTOBER 2011

- | | |
|------------------------------------|---------------------------------|
| LOW TO MEDIUM DENSITY RESIDENTIAL | MERIDIAN PUL |
| MEDIUM TO HIGH DENSITY RESIDENTIAL | PARK/ GREEN SPACE |
| MIXED USE | PIPELINE ROW |
| COMMERCIAL | STORM WATER MANAGEMENT FACILITY |
| BERM | ASP BOUNDARY |

APPROVED PIONEER AREA STRUCTURE PLAN DEVELOPMENT CONCEPT

BEAVERBROOK PIONEER LTD. LAND HOLDINGS

SCHOOL SITE TO BE SERVICED BY FALL, 2013

APPROX. AREA PLANNED FOR RESIDENTIAL DEVELOPMENT BY 2013

APPENDIX B

“Site Readiness Checklist” Supporting Information

The following are our responses to the “Site Readiness Checklist” provided to us at our meeting on Monday, February 27, 2012.

1. Does the Board have legal title or interest in the land to be used for the building envelope?

NO, not at this time. The site is designated for a future school and park site within the approved City of Spruce Grove Pioneer Area Structure Plan, as well as the City of Spruce Grove Municipal Development Plan. Beaverbrook Pioneer Ltd. would be willing to pre-dedicate the lands as Municipal Reserve. Please note that the legal description of the property is a portion of SW 12-53-27-4.

2. Does the current zoning enable the construction of a school?

Not at present. The current zoning of the site is AGR for agricultural uses. A rezoning application can be submitted at any time, and will depend on finalization of the school site boundaries. At our meeting on February 27, 2012, the City of Spruce Grove committed to the timely review and processing of a rezoning application to meet the needs of the Parkland School Division. Zoning of the school site would be in accordance with the approved Pioneer Area Structure Plan and the City of Spruce Grove Municipal Development Plan.

3. Are services such as power/water/sanitary/storm/gas available to the property line?

Not at present. Beaverbrook Pioneer Ltd., the current landowner, commits to servicing the site by fall, 2013.

4. Is the site topography suitable for the project?

YES. The topography of the site is generally flat.

5. Do geotechnical or foundation concerns exist?

NO, not to our knowledge. Geotechnical Report is attached.

6. Has a Phase 1 Environmental Site Assessment been completed?

YES. A Phase I Site Assessment was reviewed and accepted by the City of Spruce Grove in 2010. The report did not identify any issues in the location of the proposed school site.

7. Are further environmental assessments warranted?

NO.

8. Is the site outside the 1:500 year floodplain?

UNKNOWN. All stormwater management controls are designed to protect for a 1:100 year storms, as per the City of Spruce Grove's requirements (and many other Capital Region municipalities). The proposed site is beyond the 1:100 year floodplain, and meets the City of Spruce Grove design requirements in this regard. Data does not exist to determine the 1:500 year floodplain boundary and is excessive.

9. Is there adequate road access available for construction?

YES. The existing Grove Drive and Pioneer Road may be used to access the site for construction purposes. See attached Air Photo.

10. Are there any other issues, concerns or remediation required to make the site ready for construction to begin?

To the best of our knowledge, NO.

I confirm that the above information is accurate.

Signature

Print Name

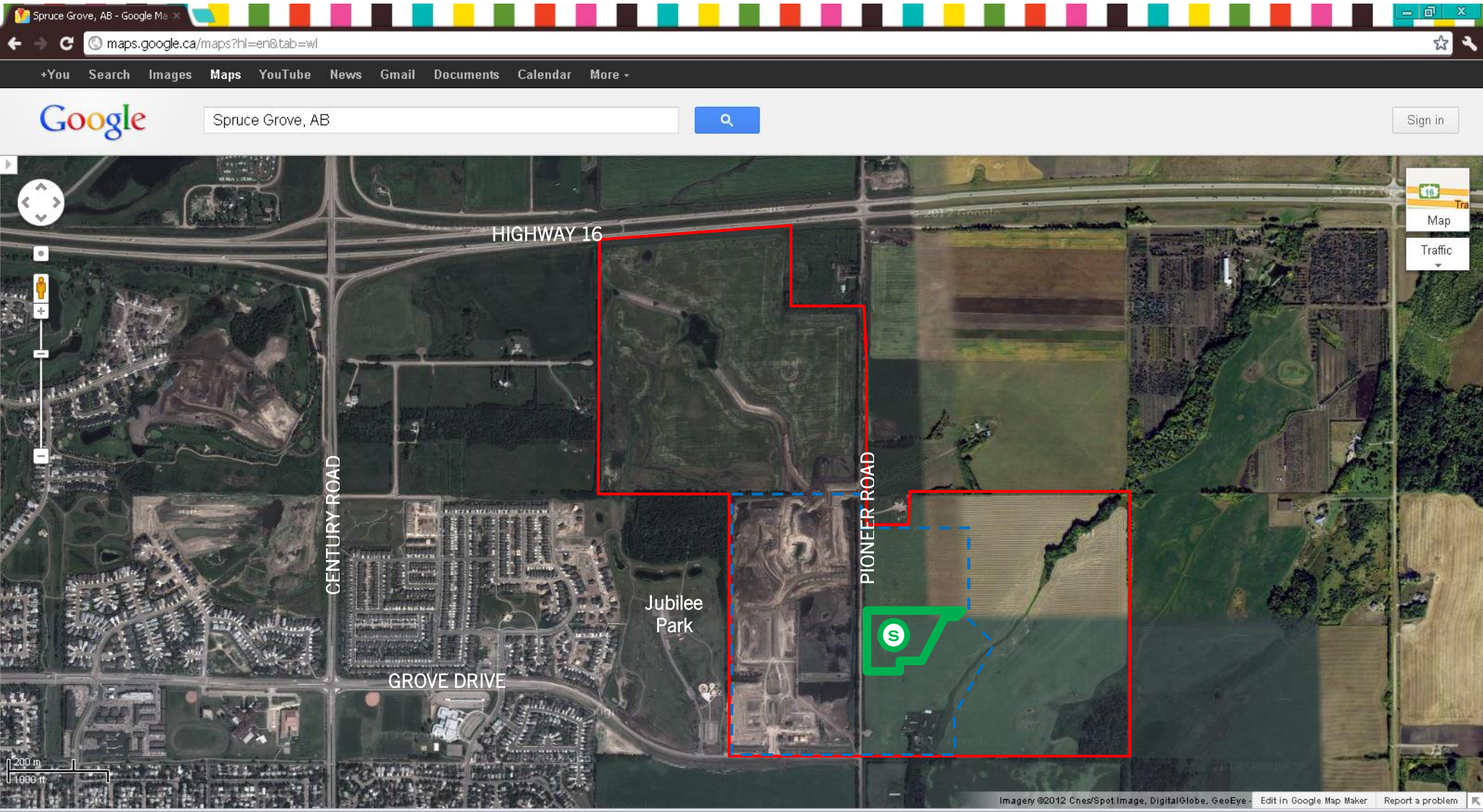
Title


Date

Contact Person if different than above:

Print Name

Phone Number



-  BEAVERBROOK PIONEER LTD. LAND HOLDINGS
-  SCHOOL SITE TO BE SERVICED BY FALL, 2013
-  APPROX. AREA PLANNED FOR RESIDENTIAL DEVELOPMENT BY 2013

APPENDIX E

PARKLAND SYSTEM REVIEW: COMMUNITY CONSULTATION

April 2012



Collaborate • Create • Learn

Parkland School Division
System Review
Phase 3
Stakeholder
Consultation



November 17, 2011

6:30 – 8:00 pm

Brookwood School
460 King Street
Spruce Grove, AB

System Review *Phase III* Stakeholder Consultation

AGENDA

November 17, 2011 6:30 – 8:00 pm

Brookwood School
460 King Street
Spruce Grove, AB

- Welcome – Introductions and Setting Purpose
- Opening Remarks – Chair Richard Gilchrist
- Presentation of Data – Hugh Skinner, Director of Planning Services,
Graham Hoffart Mathiasen Architects
- Reporting Instructions – George Couros
- Discussion and Feedback – Table Groups
- Closure – Next Steps and Participant Cards

System Review Phase III

Stakeholders



Daycares: Big Brothers
Greystone Centennial Club
Brookwood
ATA Local
Big Sisters
Alberta Education
City of Spruce Grove
Parkland Village
Playschool
Ecole Broxton Park
Chamber of Commerce
After School
Preschool
Millgrove
Kinettes Club
Before School Care
Lion's
Spruce Grove Composite
Day homes
Woodhaven
Alberta Government



System Review

Spring 2011

Moving Forward... Beyond the Immediate Priorities

In response to the collected data and stakeholder input, the Board is considering for review beyond September 2011:

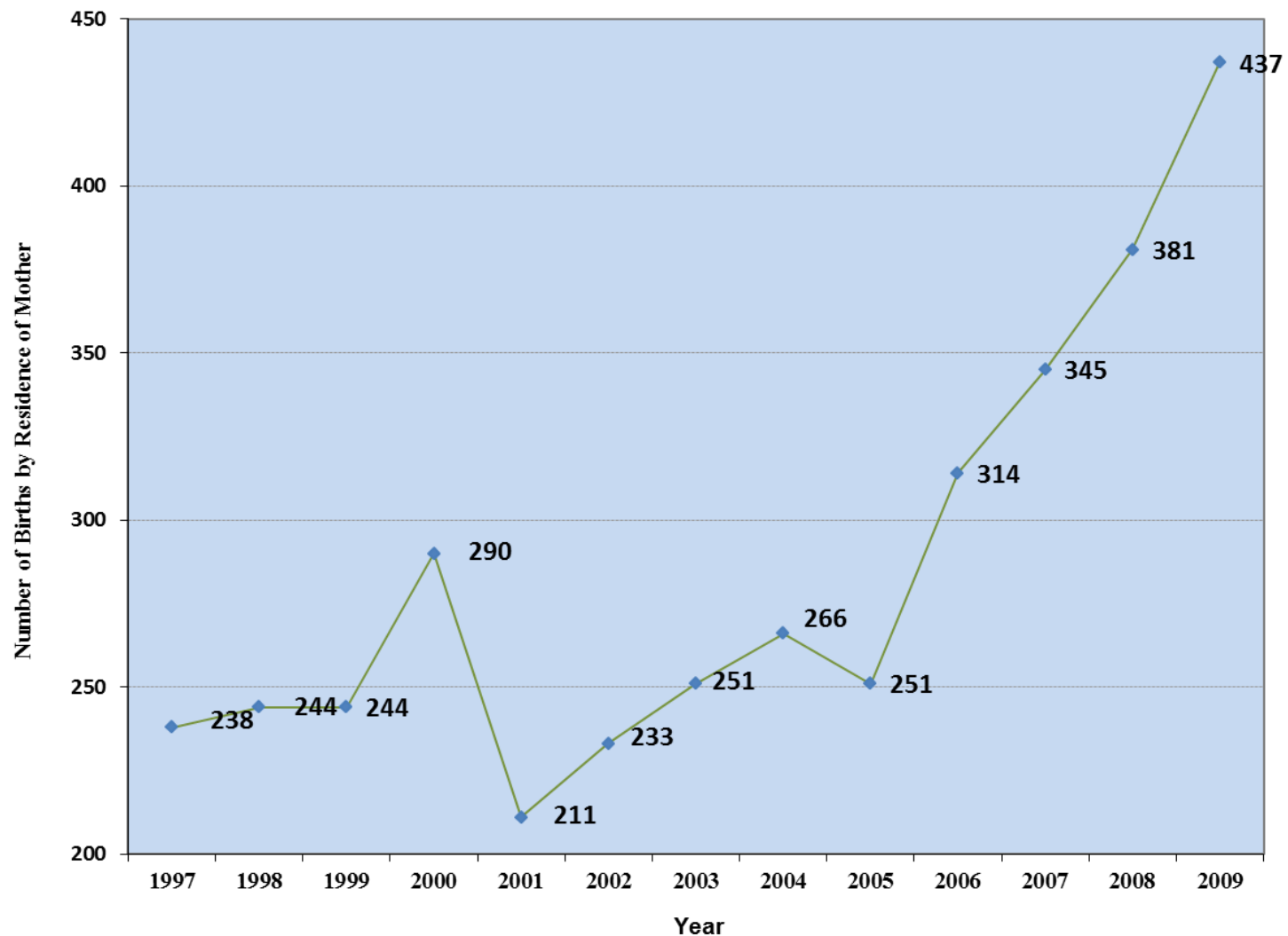
- * • **The additional space at École Broxton Park School serving Spruce Grove Kindergarten students for September 2012**
- The relationship between Forest Green School and Stony Plain Central School and if the current grade arrangement is suitable
- The boundary of École Meridian Heights School and the desire to ensure a viable English and French Immersion program
- The development of co-terminus boundaries for existing schools and future schools built
- The relationship between West Parkland Schools and if the current grade arrangement is suitable
- The rural boundaries for West Parkland and Stony Plain area
- The student enrolment and capacity within existing high schools
- * • **The Capital Plan submission for new school construction in Spruce Grove and consideration of what grade configuration is desirable (i.e. K-9, K-4, 5-9)**



System Review

City of Spruce Grove Historical Births by Year

Spruce Grove Births

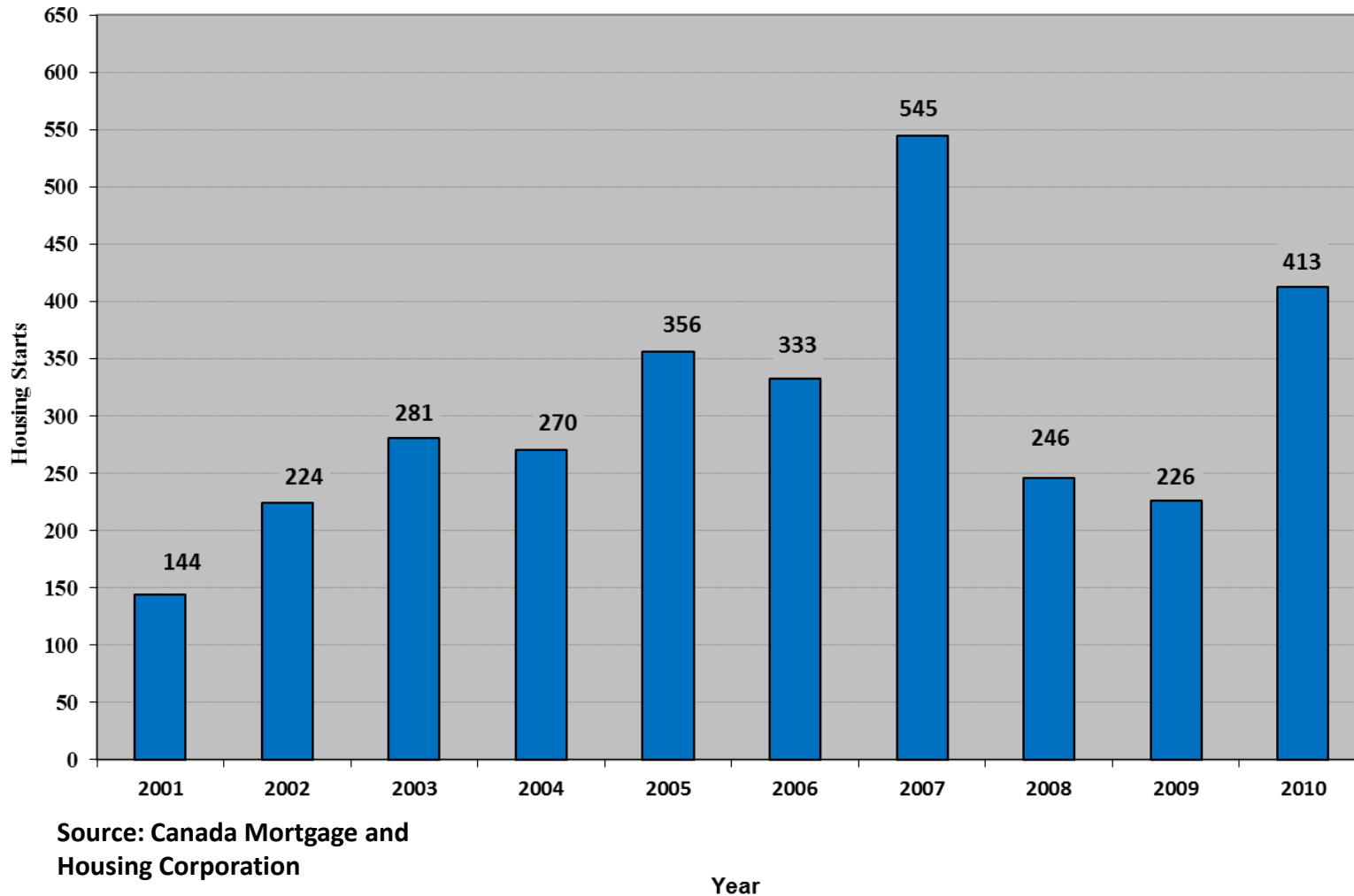




System Review

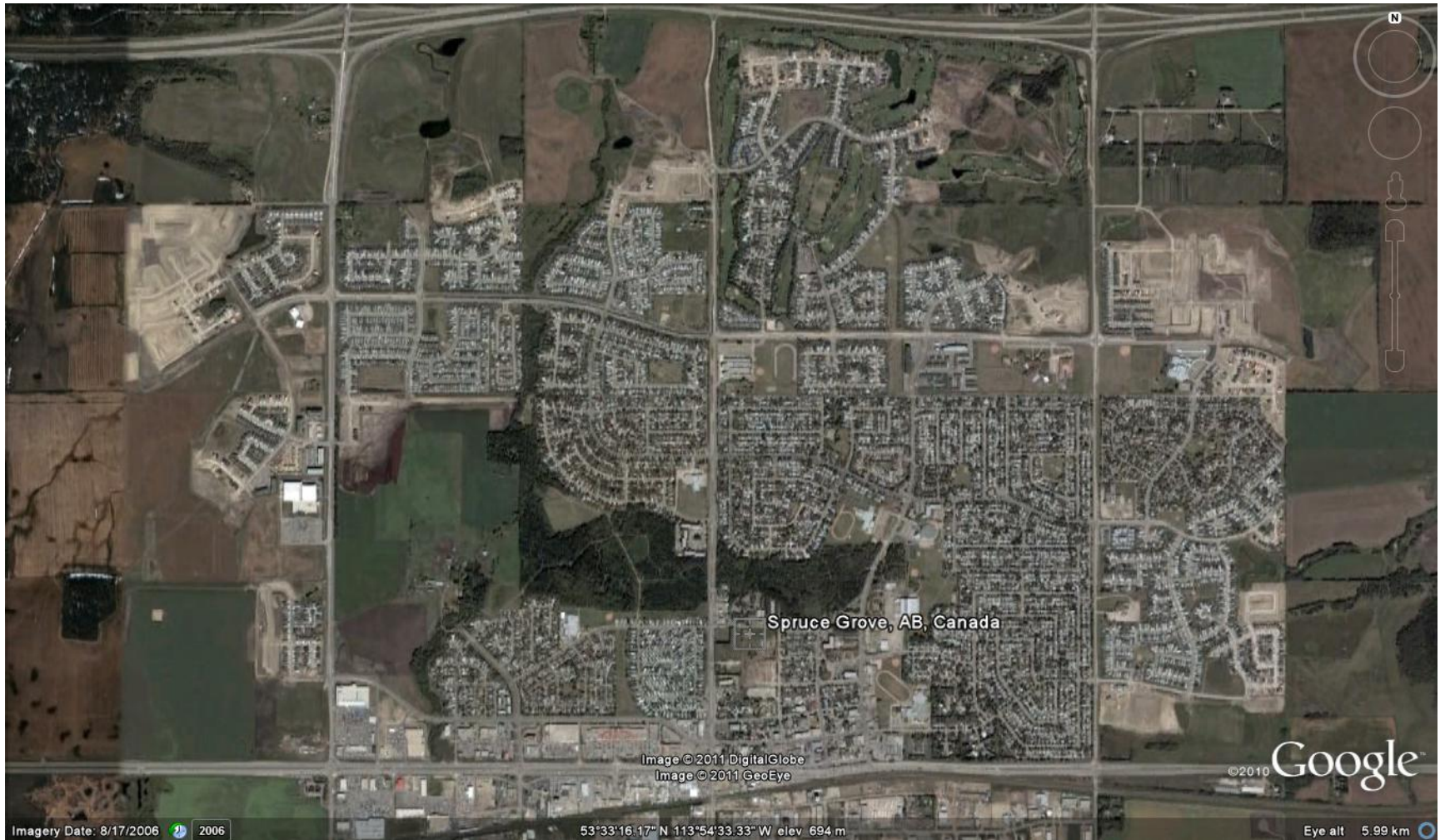
Spruce Grove Housing Starts

City of Spruce Grove
Historical Single Family and Duplex Housing Starts



System Review

Spruce Grove Development Areas





System Review

Spruce Grove Early Years

Goals

To develop a plan to adequately accommodate projected Spruce Grove Kindergarten to grade 4 enrolments for September 2012 and for the foreseeable future.

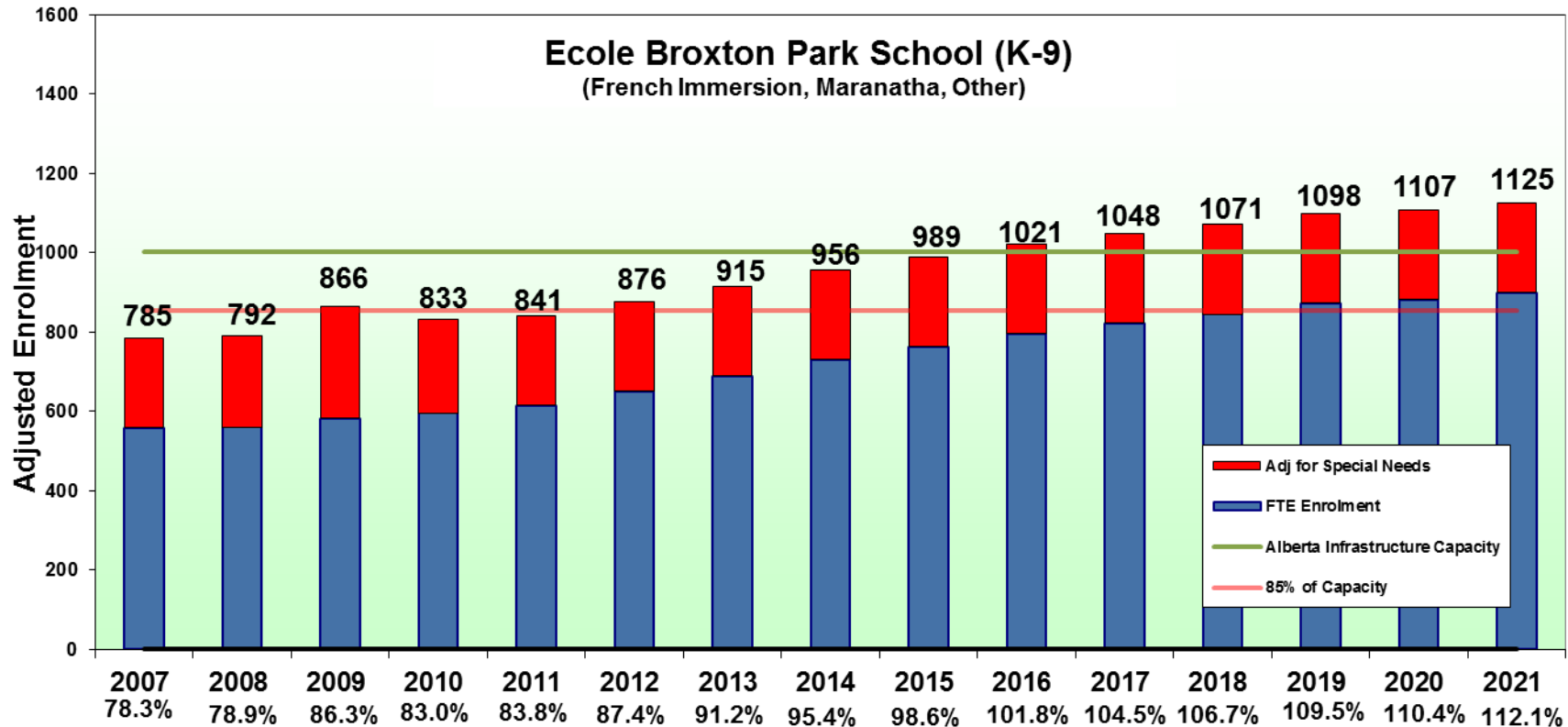
Planning Principles / Evaluation Criteria

- Anticipated community support.
- Manage projected over capacity in schools that have a limited potential to accommodate growth.
- Minimize disruptions to programming for existing students.
- Minimize facility and site capital costs.
- Maximize the potential to secure funding for new school.
- Adequately accommodate projected Spruce Grove Kindergarten to grade 4 enrolments for September 2012 and for the foreseeable future.



System Review

Ecole Broxton Park – Total Enrolment Projections – Capacity and Utilization

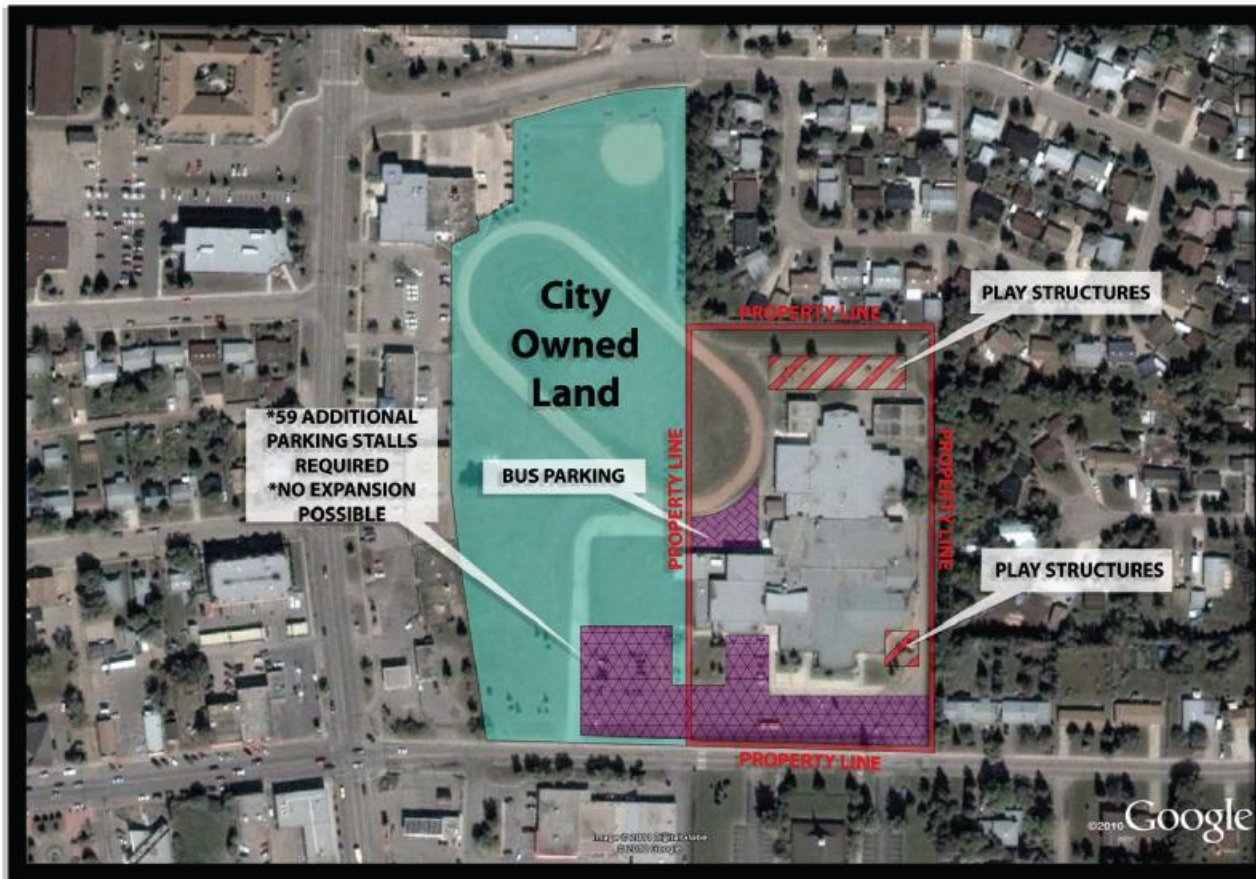


Notes:

- Enrolment projections October 18 2011
- Capacity includes December 2010 core portable movements
- % indicates Utilization Rate of Building

System Review

Ecole Broxton Park – Facility and Site



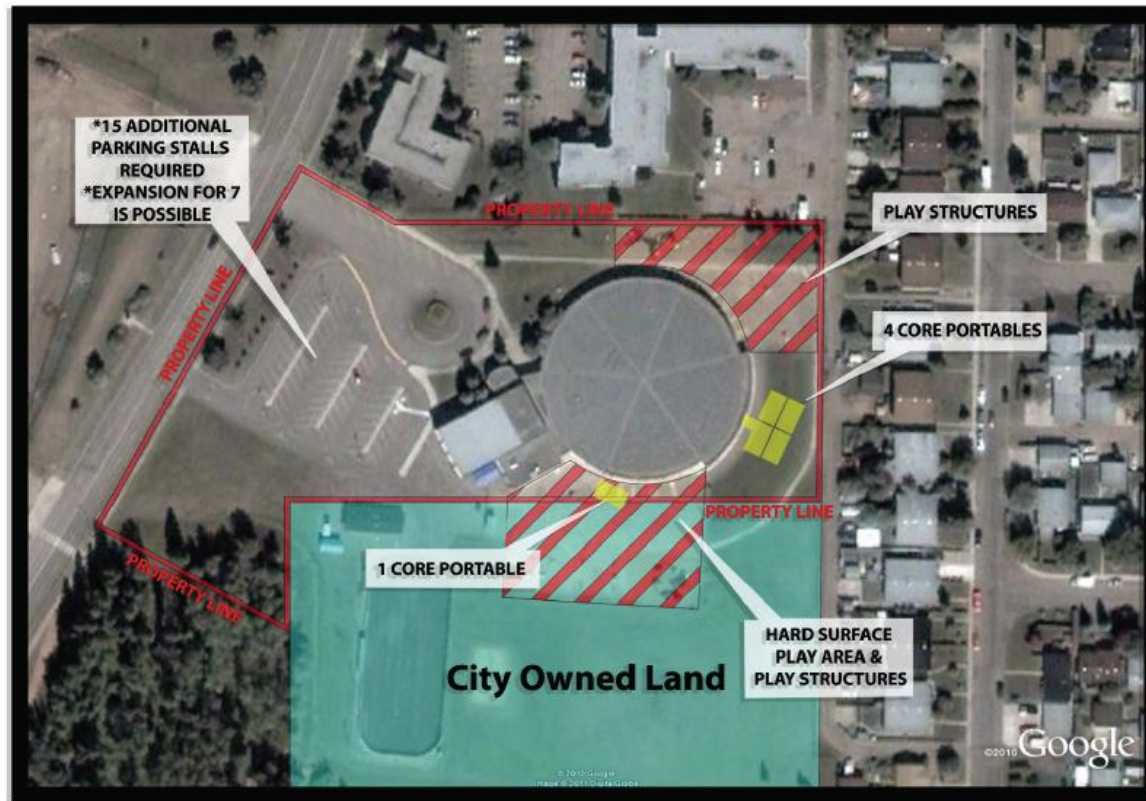
- Growing French Immersion enrolment.
- Site and facility renovation costs estimated at \$750,000 to \$1,000,000 in order to accommodate 13 to 14 Kindergarten classes from Millgrove and Brookwood.
- Site modifications to accommodate additional busses would require use of City land and agreement from City.



École Broxton Park School



System Review – Spruce Grove Early Years Brookwood – Facility and Site Capacity



- It is possible to add 2 to 3 classes to Brookwood through interior modifications.
- It is possible to add up to 5 core portables as needed.



Brookwood School



System Review – Spruce Grove Early Years

Millgrove – Facility and Site Capacity



- It is possible to add 2 to 3 classes to Millgrove through interior modifications.
- It is possible to add up to 2 core portables as needed.



Millgrove School



System Review

Spruce Grove New School – Grade Configuration and Size

Goals

To determine the appropriate size and grade configuration of proposed new school in Spruce Grove.

Planning Principles / Evaluation Criteria

- Maintain and create optimum enrolments and educational programs.
- Reduce overcrowding in schools that have a limited potential to accommodate growth.
- Enable co-terminus arrangements.
- Adequately accommodate projected Spruce Grove Kindergarten to grade 9 enrolments for 2016.
- Availability of an appropriately located and sized Reserve site.
- Potential for a community partner in a joint use facility.



System Review

Spruce Grove New School – Grade Configuration and Size

Alberta Schools Alternative Procurement (ASAP) is a new approach to build schools in Alberta. The Government of Alberta is undertaking two ASAP schools projects that will result in 32 new schools for the Edmonton Capital and Calgary regions.

The projects are being delivered through a Public Private Partnership (P3) model. P3 involves a contract between the Government of and a private consortium, in which the consortium finances and builds a number of school facilities.



System Review

Spruce Grove New School – Grade Configuration and Size

“School jurisdictions are encouraged to use these designs for developing new facilities, unless there are exceptional cases where cost savings can be demonstrated through other designs or if the nature of the school project is such that it requires facilities beyond the scope possible through these designs.

The following designs have been completed:”

Standard Core School Type	Permanent Core Area	Initial Capacity	Modular Classrooms	Built-Out Area
K to 6 – 300 Capacity	1,718 m2	100	8	2,518 m2
K to 6 – 450 Capacity	2,704 m2	150	12	3,784 m2
K to 6 – 600 Capacity	3,323 m2	300	12	4,618 m2
K to 9 – 600 Capacity	3,509 m2	200	16	5,109 m2
K to 9 – 900 Capacity	5,817 m2	500	16	7,417 m2
5 to 9 – 600 Capacity	4,247 m2	300	12	5,447 m2
5 to 9 – 900 Capacity	6,337 m2	500	16	7,937 m2

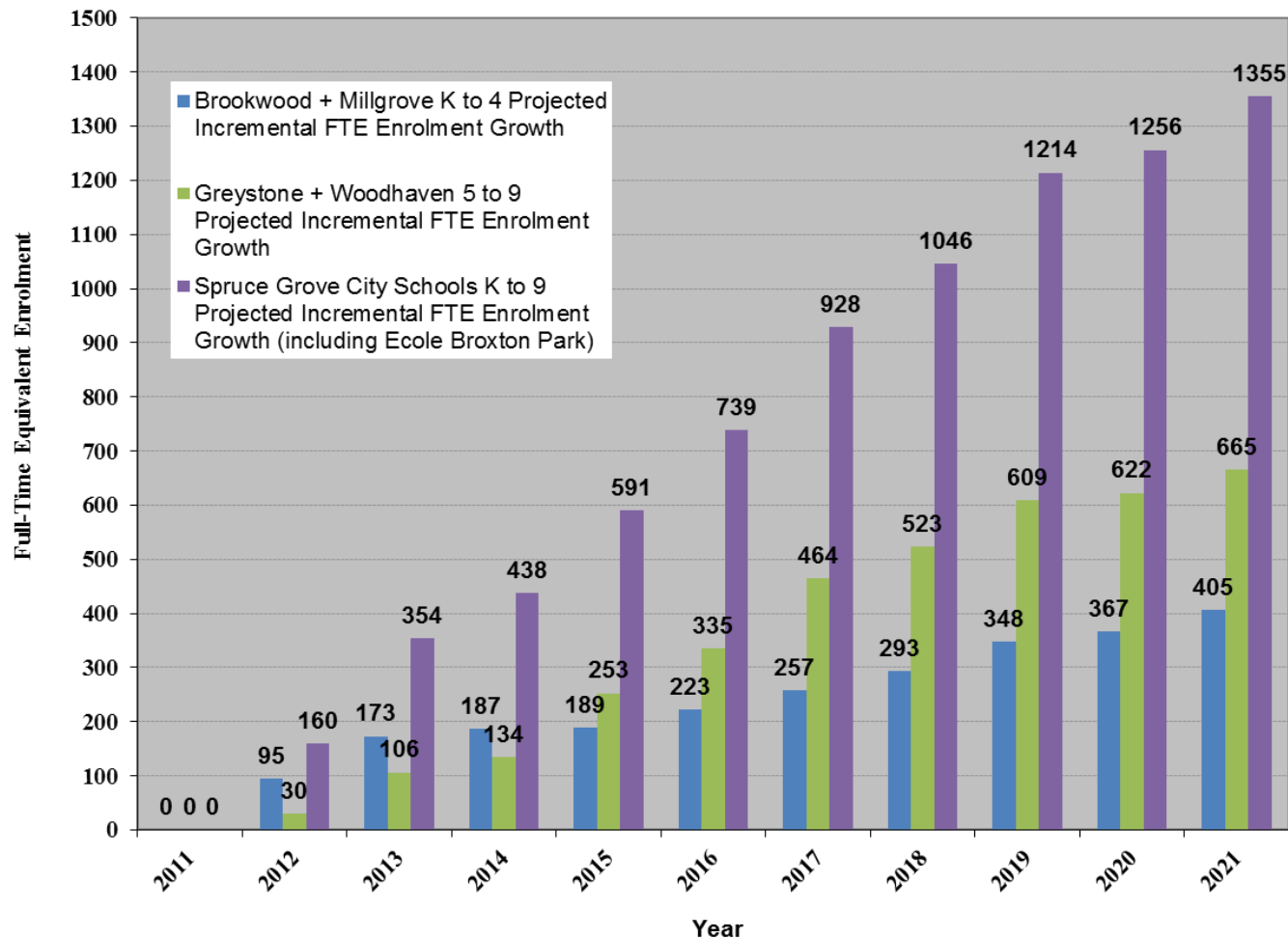
Source: Alberta Education – School Capital Manual



System Review

Projected Incremental Enrolment Growth

Spruce Grove City Schools Projected Incremental Enrolment Growth by Grade Type

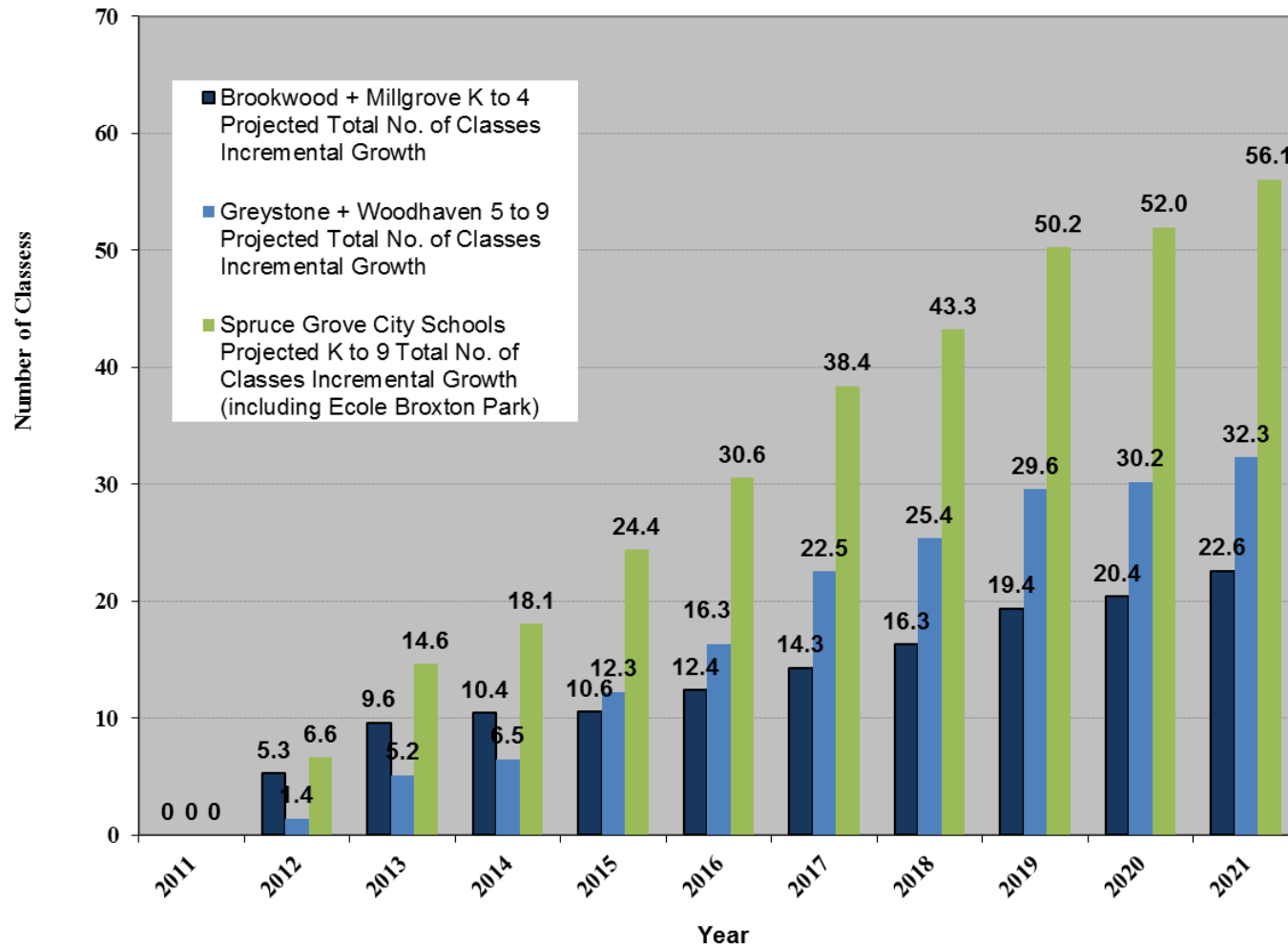




System Review

Projected Incremental Number of Classes

Spruce Grove City Schools Projected Number of Classes Incremental Growth by Grade Type



System Review Phase III *Survey*

moourl.com/psd70_survey

System Review Phase III

Survey Results

moourl.com/psd70_surveyresults

System Review Phase III

Next Steps

Continued opportunity to provide input:

- Visit and view tonight's video presentation on Parkland School Division's website;
- Paper copies of presentation available at Spruce Grove schools;
- Provide feedback to the Board;
- Public feedback will be posted on our website.

Board of Trustees Meeting

November 29 at 6:30 pm, Centre for Education

- The additional space at École Broxton Park School serving Spruce Grove Kindergarten students for September 2012.
- The Capital Plan submission for new school construction in Spruce Grove and consideration of what grade configuration is desirable (i.e. K-9, K-4, 5-9).

THANK YOU

... for making a
contribution to the
continued success of our
students and community.

achievements



friends